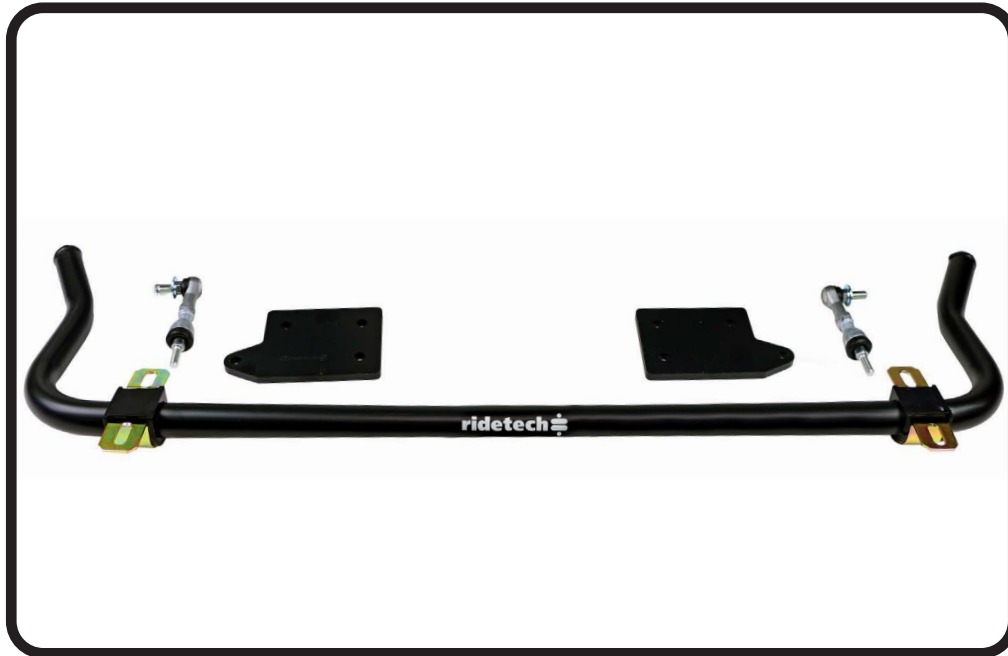
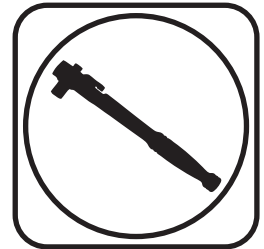




### Part # 11019100 - 1955-1957 B-Body Front Sway Bar



#### Recommended Tools



## 1955-1957 GM B-Body Front Sway Bar Installation Instructions

Table of contents	
Page 2.....	Included Components and Hardware List
Page 3.....	Sway Bar Installation
Page 4.....	Frame Mount Installation
Page 5.....	Frame Mount and PosiLink Installation

Install all Front Suspension Components before installing the Sway Bar.



### Major Components .....In the box

Part #	Description	QTY
90000731	Front Sway Bar	1
90001100	Bushing & Strap Kit	2
90000729	Sway Bar Bushing Frame Plate	2
90000717	Aluminum Step Washer - Control Arm	4
90000924	10mm Straight PosiLink - PosiLink Assembly	2
90000926	10mm 90 Degree PosiLink - PosiLink Assembly	2
99115001	10mm x 1.5" Thread Stud - PosiLink Assembly	2
90001092	Tube of Lithium Grease	1

### Hardware Kit .....99010047

Part #	Description	Usage	QTY
99371005	3/8" -16 x 1 1/4" Hex Bolt	Bushing Mount & Bushing to Frame	8
99373003	3/8" Flat washer	End link & Bushing Mounts	18
99372002	3/8" -16 Nylok Nut	End link & Bushing Mounts	8
99115006	M10 Lock Washer	PosiLink to Sway Bar	2
99112002	M10-1.5 Nylok Nut	PosiLink to Control Arm	2

### Getting Started.....

Install all front suspension components before installing the sway bar.

The Tri5 didn't come equipped with a swaybar. This kit contains the mounts needed to add a swaybar to your Tri5. If your car already has a swaybar, it will need to be removed.



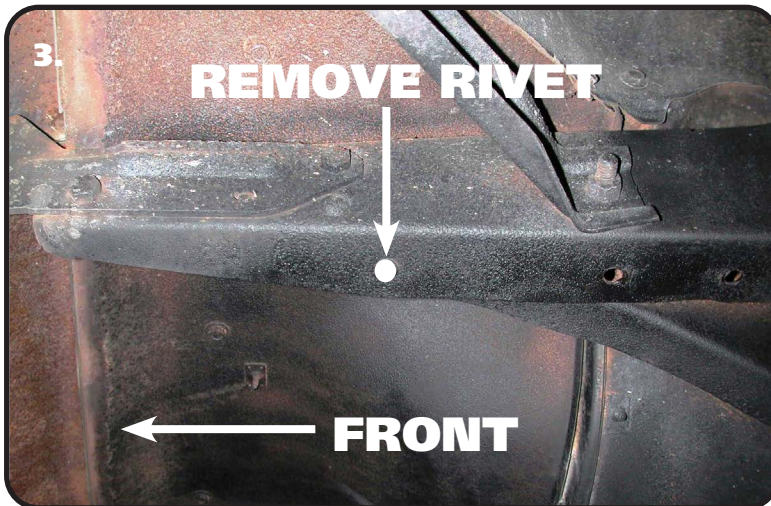
1. Apply lithium grease to the poly bushing. Install the bushing over the sway bar.



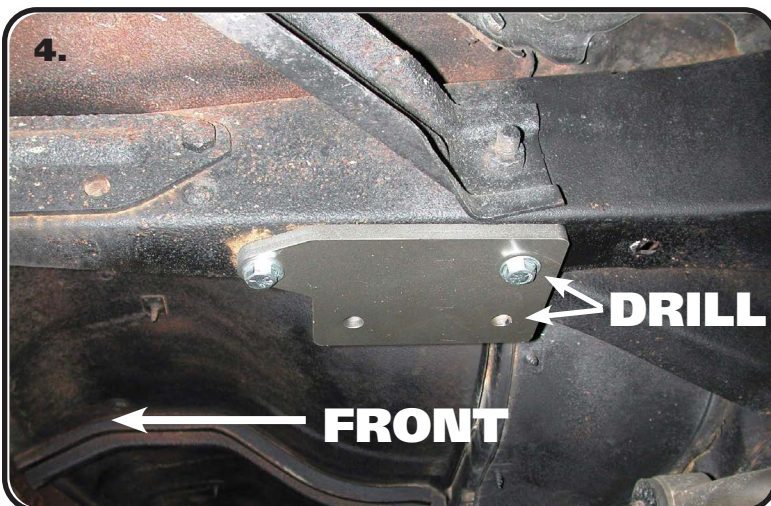
### Sway Bar Installation



2. Install bushing straps over the poly sway bar bushings.



**1955-1956 FRAME MOUNT INSTALLATION**  
3. The rivet shown in **Diagram "3"** will need to be removed. This hole will be used to locate the sway bar frame mount.



4. **Diagram "4"** shows the mounting plate installed on the driver side. Use a 3/8" flat washer on a 3/8"x 1 1/4" hex bolt to attach the frame plate to the frame. Insert the bolt into the rivet hole with the plate positioned as it is in **Diagram "5"**. With the bolt inserted into the rivet hole, use a 3/8" flat washer and 3/8" nylok nut to snug it down. Align the mounting plate parallel with the outside of the frame rail and drill the rear 2 holes through the frame. Insert a second 3/8" hex bolt and 3/8" flat washer into the rear hole with a 3/8" Flat washer and 3/8" nylok nut to tighten. Repeat process on other side and tighten hardware. The rear inner hole will be used later.





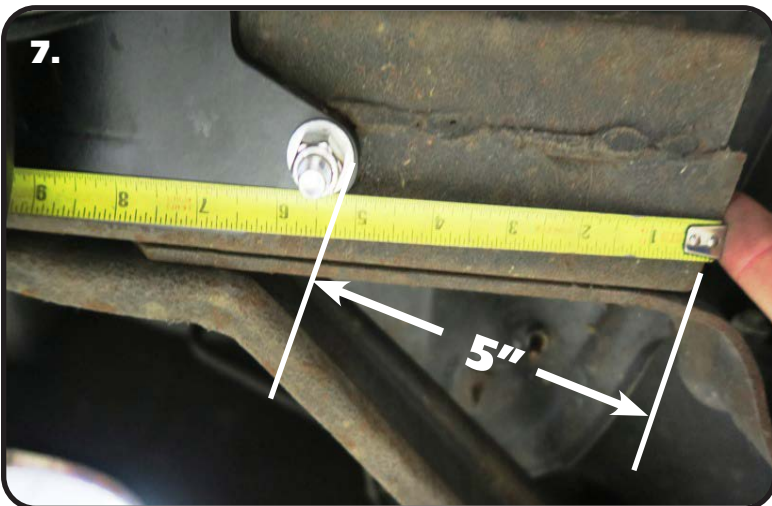
### Frame Mount Installation



5. Install 3/8" flat washers on (2) 3/8" x 1 1/4" hex bolts. Install them through the top side of the of the remaining holes in each mounting plate with the threads pointing down. The rear bolt will also go through the frame rail.



6. With the bushings and straps installed on the sway bar, put the swaybar in position on the 3/8" bolts. Attach it using 3/8" flat washers and 3/8" nylok nuts. Do **NOT** completely tighten the hardware. It will be left partially loose until the PosiLinks are installed.



### 1957 FRAME MOUNT INSTALLATION

7. There isn't a rivet to use as a locator on the 1957 frame. The frame mount is position 5" from the FRONT of the frame rail to the FRONT EDGE of the frame mount. The center of the bolt hole is 1 1/2" from the outside edge of the frame. Use the frame mount as a template to drill the 2 holes. The hardware will need to be installed from the top with the threads pointing down. Use a 3/8" x 1 1/4" hex bolt with a flat washer in each one. Do this for both sides. With the hardware installed, install a frame mount on the hardware with the SMALL bolt pattern to the inside of the car. Tighten down with a 3/8" flat washer and 3/8" nylok nut



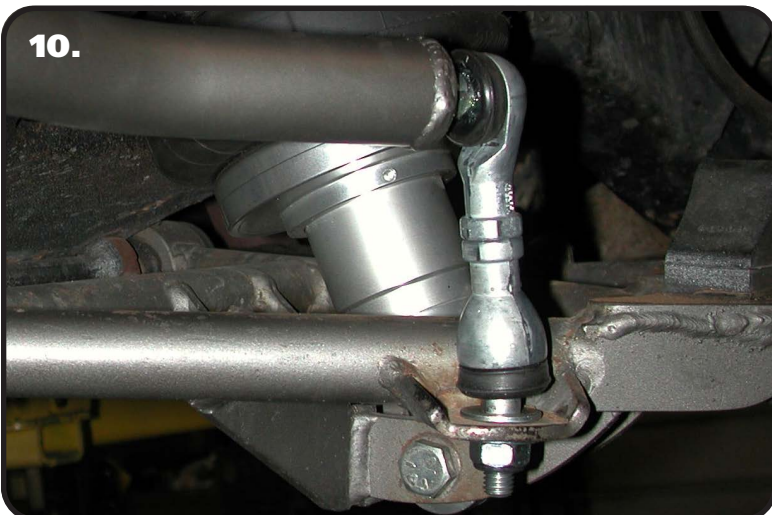
### Frame Mount & End Link Installation



8. Install 3/8" flat washers on (2) 3/8" x 1 1/4" hex bolts and install them through the top side of the of the remaining holes in each mounting plate with the threads pointing down. With the bushings and straps installed on the sway bar, put the sway bar in position on the 3/8" bolts. Attach it using 3/8" flat washers and 3/8" nylok nuts. Do **NOT** completely tighten the hardware. It will be left partially loose until the PosiLinks are installed.



9. Bolt the 90 degree end of the PosiLink to the sway bar. A 3/8" flat washer and 10mm lock washer must be installed between the PosiLink and the bar.



10. Bolt the straight end of the PosiLink to the lower control arm. An aluminum step washer must be installed on each side of the control arm tab. Fasten with a 10mm Nylok nut. Then tighten the bushing frame bolts.