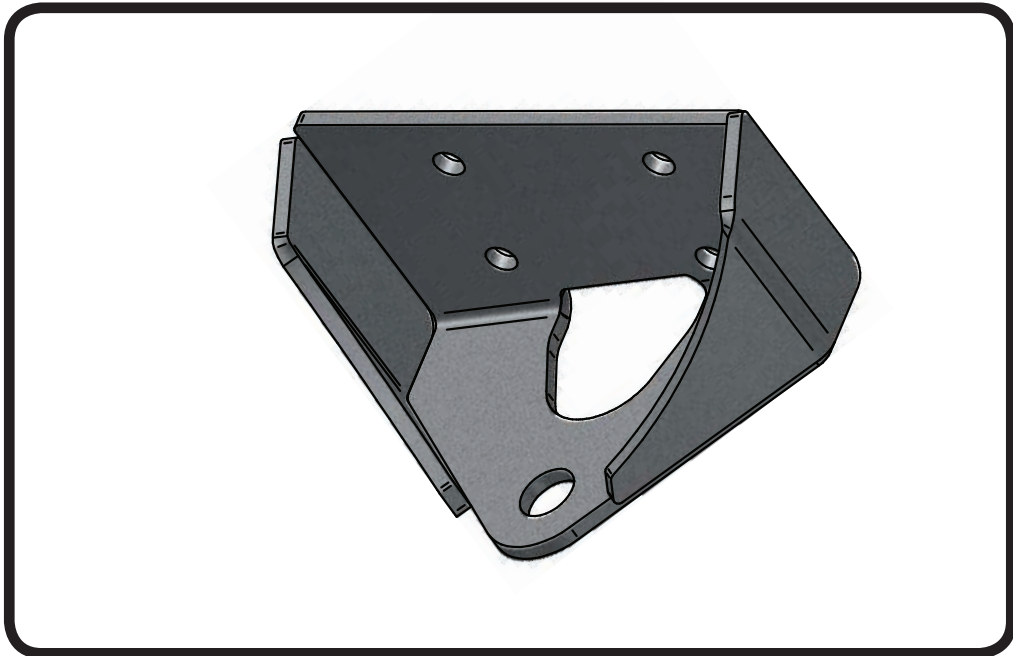
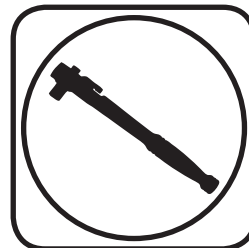
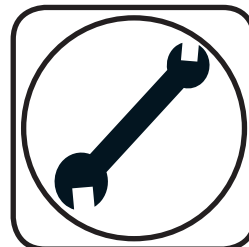




Part # 11059121 - 1958-1964 B-Body Slave Cylinder Bracket Kit



Recommended Tools



**1958-1964 GM B-Body Slave Cylinder Bracket Kit
Installation Instructions**

Table of contents
Page 2..... Included components and Hardware List
Page 3..... SwayBar Installation

THIS KIT IS DESIGNED TO BE USED WITH THE STREETGRIP SWAYBAR KIT (11059120).





Major ComponentsIn the box

Part #	Description	QTY	
90002532	Slave Bracket	1	
Part #	Description	Usage	QTY
99311002	5/16"-18 x 1 1/4" Hex Bolt	Bushing Strap to Frame	2
99313003	5/16" SAE Flatwasher	Bushing Strap to Frame	2
99312003	5/16"-18 Nylok Nut	Bushing Strap to Frame	2

Getting Started.....

THESE INSTRUCTIONS SHOULD BE USED IN CONJUNCTION WITH THE SWAYBAR INSTRUCTIONS.



1. With the swaybar in position, slide the Slave Cylinder bracket over the end of the swaybar with the mounting holes to the OUTSIDE of the car. Position the bracket in the area it will be mounted.



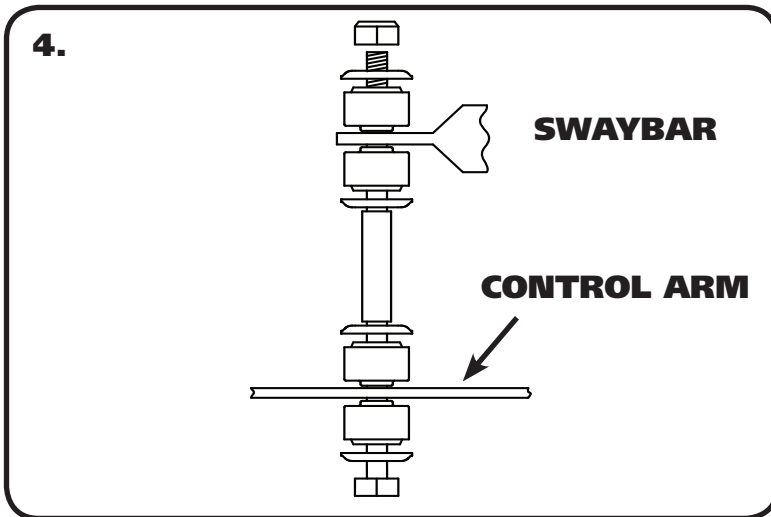
2. Open up the Poly SwayBar Bushings and install them over the Delrin Sleeves.



SwayBar Installation



3. Install the bushing strap onto the bushing with the NARROW side to the outside of the frame. Install a 5/16" flatwasher and 5/16" nylok on each bolt sticking through the bushing strap and slave cylinder bracket. There should be 2 bolts sticking through the slave cylinder bracket and 2 bolts sticking through both the slave cylinder bracket and bushing strap. Do **NOT** Complete tighten the Hardware. It will be left partially loose until the End Links are installed.



4. Install the End Links. Use Diagram "5" for proper installation. Tighten the Hex Nut enough to slightly compress the Bushings.

5. Tighten the Sway Bar Mounting Hardware.

6. Reattached the end of the slave cylinder to the bracket.