



**Part # 11164798 - 1967-1969 F-Body Multi-Leaf Lowering Kit**



Recommended Tools



## 1967-1969 F-Body Multi-Leaf Lowering Kit Installation Instructions

### Table of contents

- Page 2..... Included components and Hardware List
- Page 3..... Leaf Spring Lowering Kit
- Page 4..... Coil Spring Trimming Template

THIS LOWERING KIT IS DESIGNED TO BE USED WITH RIDETECH STREETGRIP KIT.





### Major Components .....In the box

Part #	Description	QTY
90002528	Leaf Spring Spacer Block	2
99436002	7/16"-20, 3" x 6 3/4" U-Bolt	2
99432009	7/16"-20 High Nut	8
99433005	7/16" SAE Flatwasher	8

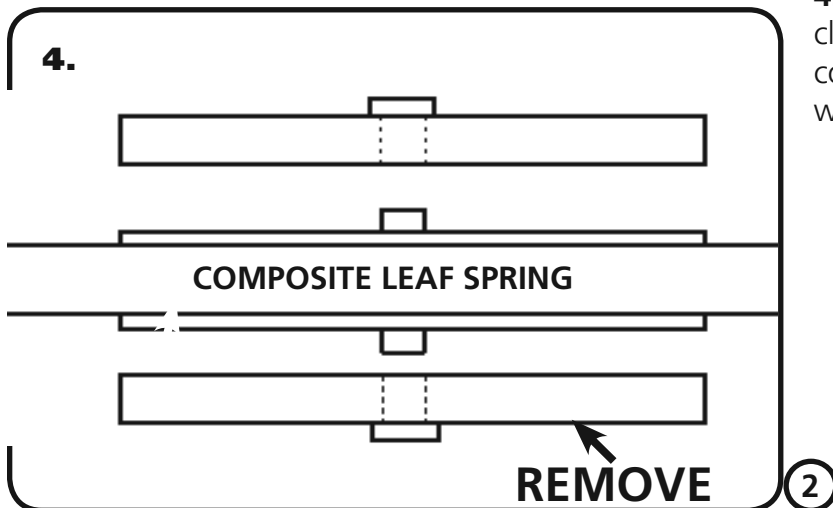
### Getting Started.....

**IT IS VERY IMPORTANT THAT NOTHING COMES IN CONTACT WITH THE LEAF SPRING.**

This kit is designed to be used in conjunction with the Ridetech StreetGrip Kit to provide some additional drop. This kit contains a Lowering Block for the rear and a template for trimming the StreetGrip CoilSpring. The kit can be installed during your StreetGrip install or after the StreetGrip kit has been installed. If your doing a new install, the StreetGrip Kit instructions will be used in conjunction with these instructions.

1. Jack the car up and support it by the frame rails. For the rear, you will need to raise and lower the rear differential with a jack to ease installation. For the front, you will need to be able to swing the lower control arm down with a jack underneath it.
2. With the car supported by the frame, put the jack underneath the rear end housing and raise the jack up just enough to support the differential. Disconnect the bottom of the shock. Retain the OEM hardware.
3. Remove the nylok nuts holding the OEM retaining plate and the retaining plate.

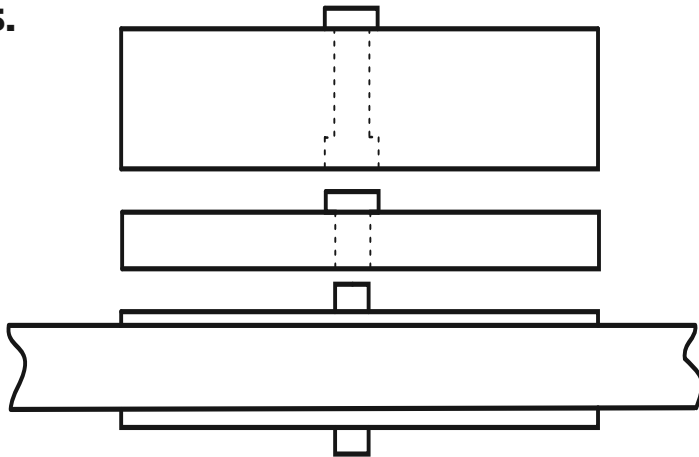
4. The original StreetGrip kit came with a clamping plate on the top and bottom of the composite leaf spring. The **BOTTOM** plates will need to be removed.





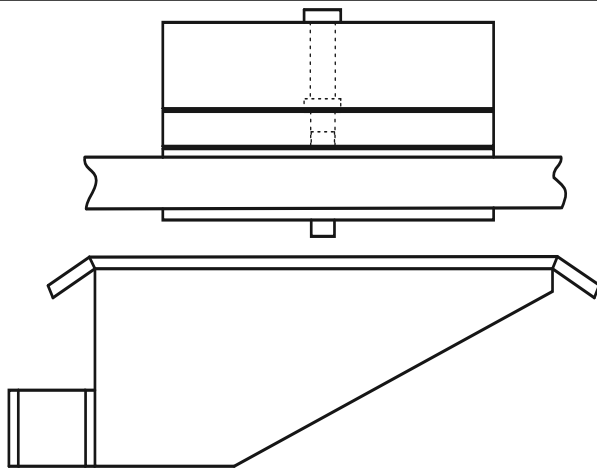
### Leaf Spring Installation

5.



5. The Lowering Block will go on TOP of the upper clamping plate. Place the upper clamping plate, with the pin up, onto the leaf spring. Make sure the leaf spring locating pin is engaged into the center hole on the bottom side of the clamping plate. Install the Lowering Block on TOP of the clamping plate. Lower the differential down onto the lowering block, engaging the locating pin into the locating hole of the OEM leaf spring mount.

6.



6. The lowering kit includes U-Bolts to replace the inner bolts supplied with the original StreetGrip kit. Remove the 2 inner bolts from each leaf spring mount and replace with the supplied 7/16"-20 U-Bolts. Install the OEM lower mount being sure the Pins and Holes are aligned. Install the 7/16" Flatwashers & 7/16"-20 High Nuts. Evenly tighten the hardware by tighten in a crisscross fashion. Torque the nuts to 55 ftlbs.

**Note:** When tightening the mounts, pay attention to the pads on the springs to make sure there is visible compression of the pads. .030" - .060" of compression is needed for the springs to be securely mounted. All of the clamping force needs to be on the spring itself.

### Coil Spring Trimming

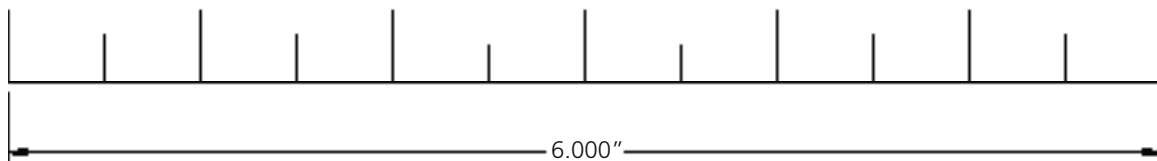
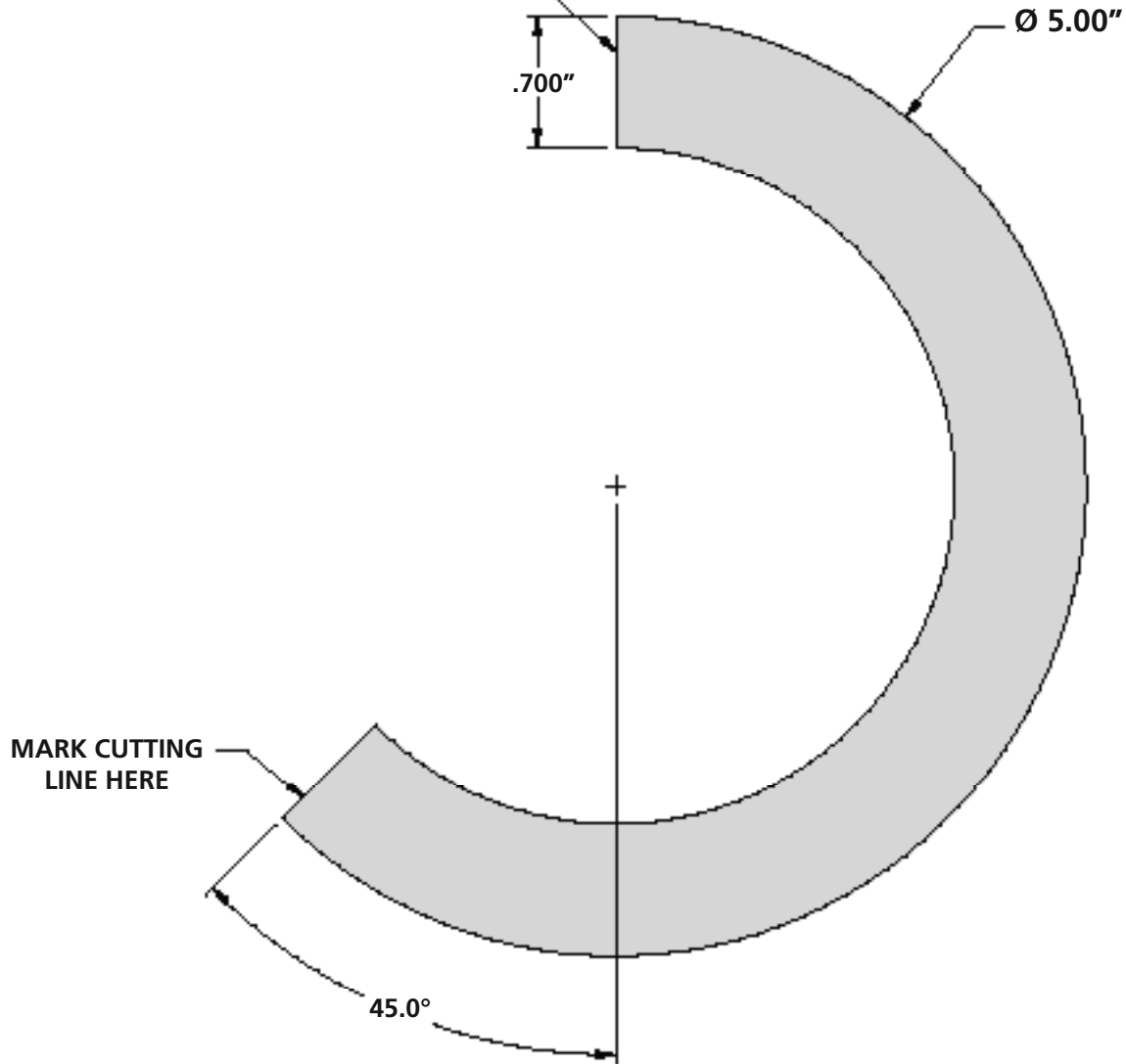
**A TEMPLATE IS PROVIDED ON THE NEXT PAGE TO MARKING AND CUTTING THE COIL SPRING TO MATCH THE REAR DROP.**

1. Refer to the Coil Spring instructions for removal and installation of the coil spring.
2. Cut out the **SHADED** area of the Template on the next page.
3. Align the end of the Coil Spring to the proper end of the Template. Using the Template, mark the coil spring and cut off. Reassemble using the Coil Spring instructions.



### CoilSpring Template

ALIGN TO END OF COIL SPRING



SCALE PROVIDED TO CHECK TEMPLATE SIZE.