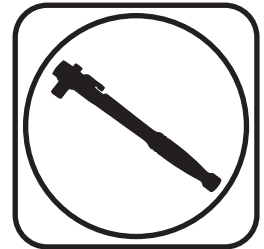




Part # 11165399 - 1967-1969 F-Body Delrin Leaf Spring Bushings

Recommended Tools



1967-1969 F-Body Delrin Leaf Spring Bushings Installation Instructions

Table of contents

Page 2..... Included Components and Bushing Installation

THESE DELRIN LEAF SPRING BUSHINGS WILL FIT THE OEM LEAF SPRING. THE RIDETECH COMPOSITE LEAF SPRING (11164799) IS RECOMMENDED TO ACHIEVE MAXIMUM PERFORMANCE.

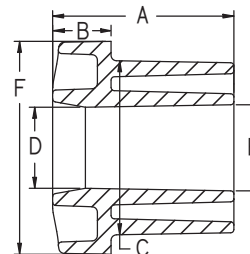




Major ComponentsIn the box

BUSHING DIMENSIONS

QTY	Part #	A	B	C	D	E	F	POSITION
4	70012426	1.836	.610	1.549	.802	.742	1.950	Rear Leaf Spring
4	70012427	1.852	.610	2.020	.802	.742	1.852	Front Leaf Spring
4	70012428	1.660	.535	1.557	.742	.788	1.660	Rear Frame Bushing



INNER SLEEVES

QTY	Part #	A	B	C	POSITION
6	90000526	.750	.500	3.750	All Bushings



MISCELLANEOUS PARTS & HARDWARE

Part #	Description	QTY
90002496	Shackle Plate	4
	Hardware	
99501035	1/2"-13 x 5" Hex Bolt GR8	6
99502009	1/2"-13 Nylok Nut GR8	6

Bushing Installation

IF INSTALLING COMPOSITE LEAF SPRINGS, THEY SHOULD BE INSTALLED IN CONJUNCTION WITH THE LEAF SPRING BUSHINGS.

1. Jack the car up and support it by the frame rails. You will need to raise and lower the rear differential with a jack. With the car supported by the frame, put the jack underneath the rear end housing and raise the jack up just enough to support the differential. Disconnect the bottom of the shock and remove the rear leaf springs retaining the OEM leaf spring mount hardware.
2. If you purchased the Composite Leaf Springs and Delrin Bushings together, the bushings will be preinstalled in the leaf springs. If replacing the OEM bushings with Delrin Bushings, the OEM bushings will need to be removed and all debris removed from the holes to ease installation of the bushings.
3. The front bushing is the largest bushing of the 3. The frame bushing and rear leaf spring bushing are similar in size, but have one distinct difference. The rear leaf spring bushing is longer than that frame bushing. Plus, it has a thicker shoulder.
4. The leaf spring bushings can be pressed into the leaf springs using an arbor press or bench vise. Press the bushings in followed by the inner sleeves. All the inner sleeves are the same size. Be sure to put the bushing with the TAPERED inner bore in the rear of the leaf spring.
5. The Shackle Plates and Hardware can be used to push the rear bushings into the frame location. Start the bushings into the frame and insert a 1/2"-13 bolt into a shackle plate. Insert the bolt/shackle plate into the bushing and install a second shackle plate on the bolt sticking through the bushing. Install a 1/2"-13 nut and tighten until the bushings bottom out on the frame. Remove the shackle plates and install the inner sleeve.
6. Reinstall the leaf spring torquing the bushing hardware to 75 ftlbs. Reattach the shocks.