



**INSTALLATION
INSTRUCTIONS**



Part # 11224499



Rear Lower StrongArms

1964-1972 GM A-Body

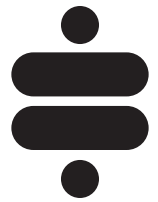


www.ridetech.com
812.482.2932





**Please Read And Understand All Instructions
And Warnings Prior To The Installation Of
This Product.**



THANK YOU

Congratulations on your new Ridetech product! It's an honor that you've selected the Ridetech brand to upgrade your ride. Our products are developed around quality and performance without compromise. We're confident you'll have many years (and miles) of pure driving enjoyment.
Thank you for choosing Ridetech!

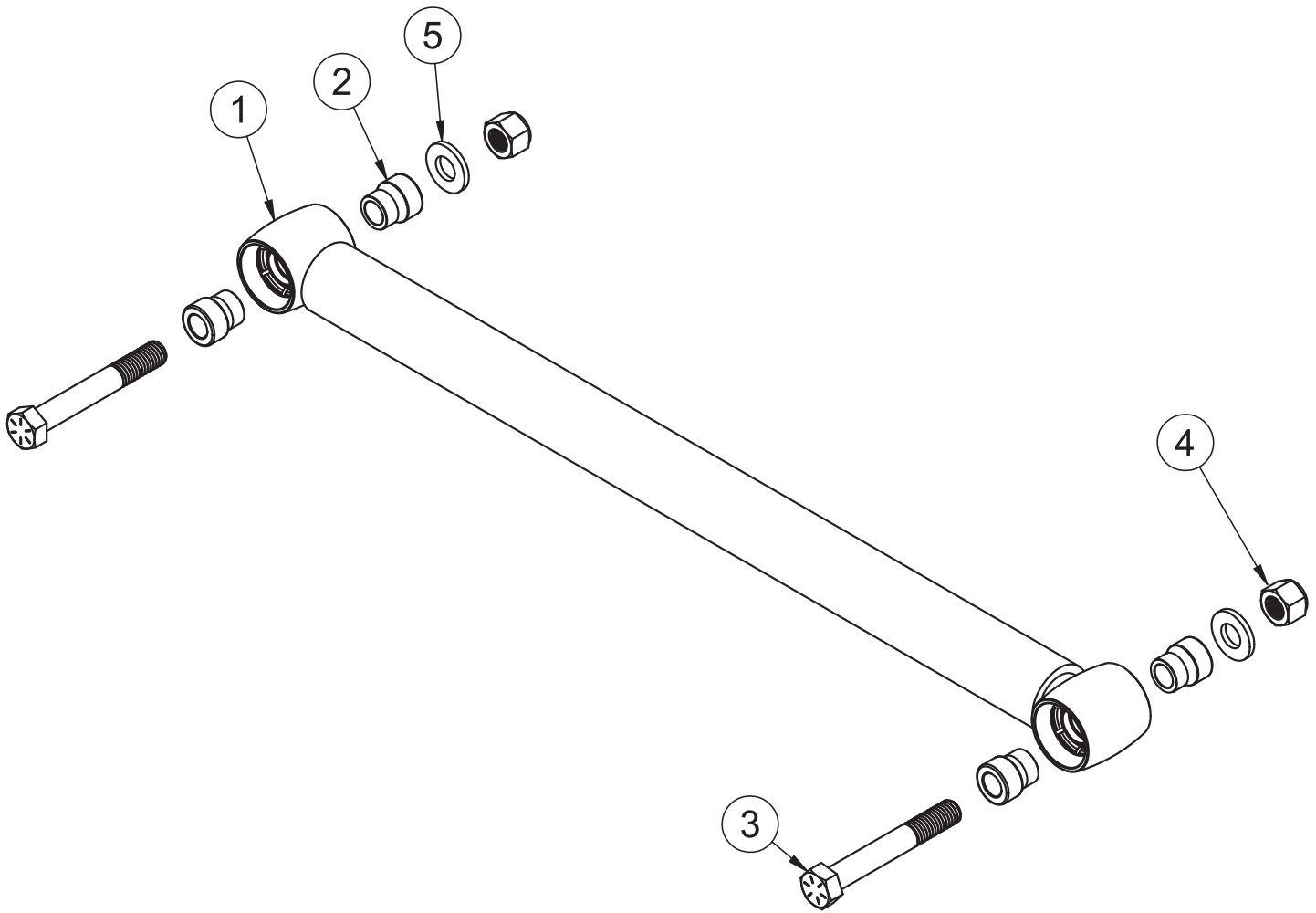
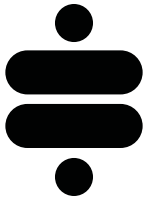
Road Map

| | |
|-------------------------------|----------|
| Exploded View | 3 |
| StrongArm Installation | 4 |

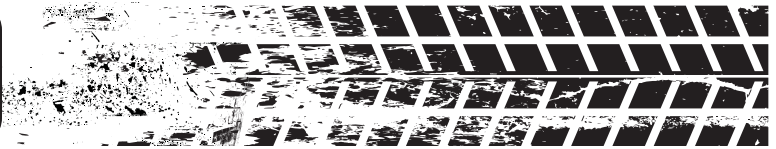
| COMPONENTS | | | |
|-------------------|---|------------------------------------|------------|
| Item # | Part # | Description | Qty |
| 1 | 90002826 | Lower Control Arms | 2 |
| 2 | 70013784 | 1/2" ID R-Joint Spacer | 8 |
| | R-Joint Components - (Installed in bar ends) | | |
| | 70013275 | R-Joint Center Ball | 4 |
| | 70013276 | R-Joint Composite Center Ball Cage | 4 |
| | 70013279 | Retaining Ring | 4 |
| | 70013280 | Wavo Wave Spring | 4 |
| | Hardware Kit: 99010096 | | |
| 3 | 99501005 | 1/2"-13 x 3 1/2" Hex Bolt | 4 |
| 4 | 99502009 | 1/2"-13 Nylok Nut | 4 |
| 5 | 99503014 | 1/2" SAE flat Washer | 4 |



EXPLODED VIEW



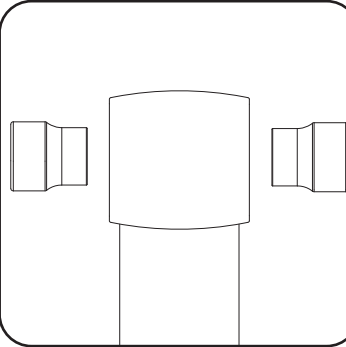
Arm Installation



R-JOINT SPACER INSTALLATION

Install the Spacers by inserting the SMALL side of the SPACER into the Center Pivot Ball. Push them in until they bottom out and stop.

UPPER R-JOINTS



New R-Joints will be quite stiff (75-90 in/lbs breakaway torque) until they "break in" after a few miles of use. After the break in period, they will move much more freely. Because the composite bearing race contains self lubricating ingredients, no additional lubrication is required. Any additional lubrication will only serve to attract more dirt and debris to the R-Joint and actually shorten its life.

1. Remove the existing lower trailing arms. Remove and replace the arms one at a time to prevent the axle from rotating.
2. Insert the spacers into each of the R-joints. Refer to the diagram above.
3. Attach one end of the lower StrongArm to the frame mount using the supplied $\frac{1}{2}$ " x $3\frac{1}{2}$ " bolts, flat washers and nylok nuts.
4. Attach the rear of the lower StrongArm to the axle bracket using the supplied $\frac{1}{2}$ " x $3\frac{1}{2}$ " bolts, flat washers and nylok nuts.
5. Repeat on the opposite side.

Torque the hardware to **75 ft-lbs.**



Figure 1



Figure 2