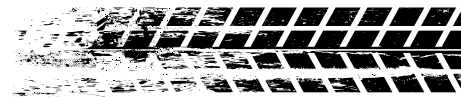




INSTALLATION INSTRUCTIONS



Part # 11227299



Rear Upper Arm R-joint Bushing Kit w/Tool

1964-1977 GM A-Body

1978-1988 GM G-Body



www.ridetech.com
812.482.2932



**Please Read And Understand All Instructions
And Warnings Prior To The Installation Of
This Product.**

THANK YOU

Congratulations on your new Ridetech product! It's an honor that you've selected the Ridetech brand to upgrade your ride. Our products are developed around quality and performance without compromise. We're confident you'll have many years (and miles) of pure driving enjoyment.
Thank you for choosing Ridetech!

Road Map

Bushing Removal/Installation

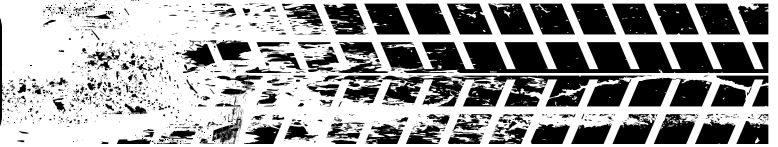
3-4

COMPONENTS		
Part #	Description	Qty
R-Joint Housing Components		
90002122	R-Joint Bushing Housing with R-Joint Components installed	2
70013784	R-Joint Spacers	4
R-Joint Components Installed In Housing		
70013275	R-Joint Center Ball	
70013276	R-Joint Composite Center Ball Cage	
70013279	Retaining Ring	
70013280	Wavo Wave Spring	
Bushing Removal & Installation Tool Components		
90002912	1.875" ID x 1.00" Long Notched Sleeve	1
90002880	1.825" OD Washer	1
90002913	2.625" OD Washer with Flat	1
90002559	2.375" ID x 2.375" Long Sleeve	1
99505003	1/2"-10 x 8" ACME Threaded Rod	1
99502013	1/2"-10 ACME Hex Nut	2
99503003	1/2" Flat Washer	2

NOTE:

New R-Joints will be quite stiff (75-90 in/lbs breakaway torque) until they "break in" after a few miles of use. After the break-in period, they will move much more freely. The composite bearing race contains self-lubricating ingredients. No additional lubrication is required. Additional lubrication will only attract more dirt and debris to the R-Joint and may shorten its life.

Bushing Removal/Install



1. Begin by sliding the 2 3/8" sleeve (1) over the OEM bushing. Insert the 1/2"-10 x 8" threaded rod (2) into the OEM bushing. Next, install the large 2 5/8" diameter flat-sided washer (3) onto the threaded rod on the sleeve side. Install the small 1.825" washer (4) on the other end of the threaded rod, followed by a 1/2" washer (5) and nut (6) on each end of the threaded rod. See Figures 1 & 2.

2. Tighten the 1/2" nuts, pushing the old bushing out of the mount.

3. Start the R-Joint Housing into the OEM bushing hole by hand (Figure 3).

4. Insert the 1/2"-10 x 8" threaded rod (1) into the new bushing and then install the 1 7/8" ID x 1" sleeve (2) on the opposite side of the bushing. This sleeve will be centered over the bushing hole. Install the 1.825" washer (3) on the stud (on the bushing side). Install the 2 5/8" flat-sided washer followed by a 1/2" washer (5) and nut (6) on each end of the threaded rod. See Figure 4 below.

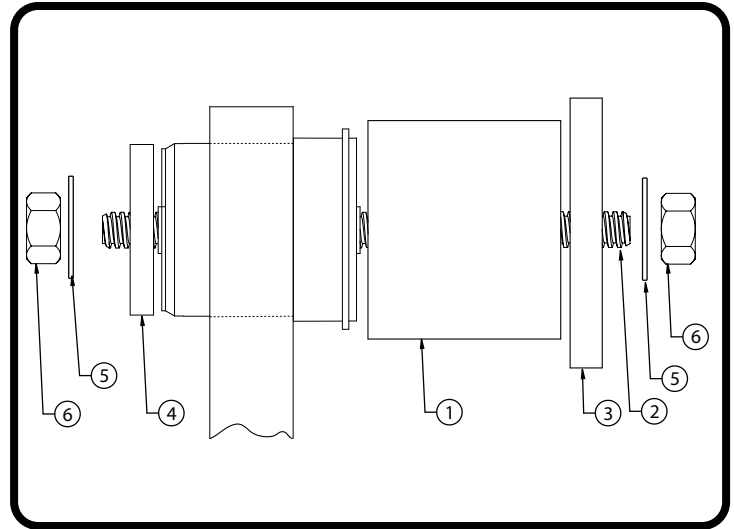


Figure 1

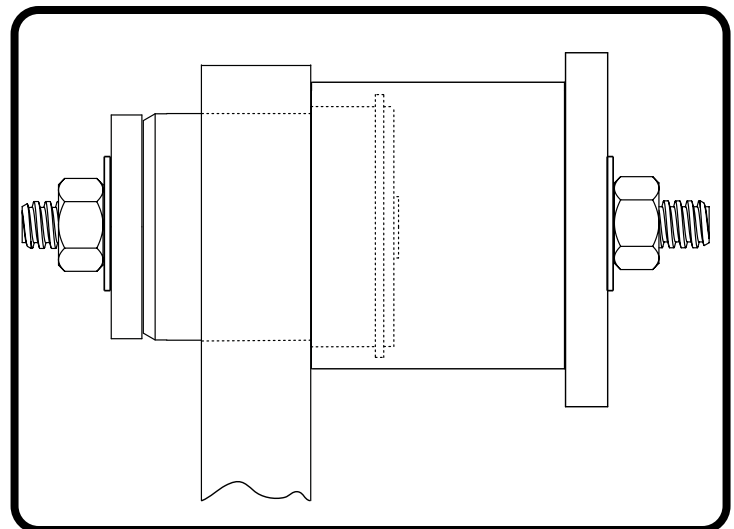


Figure 2

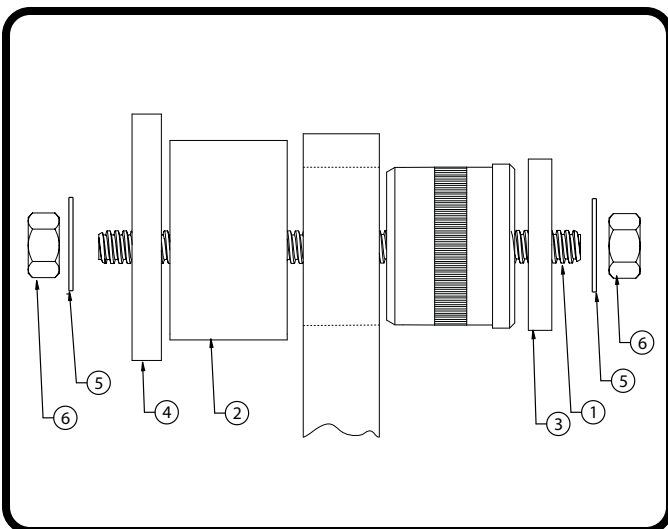


Figure 4

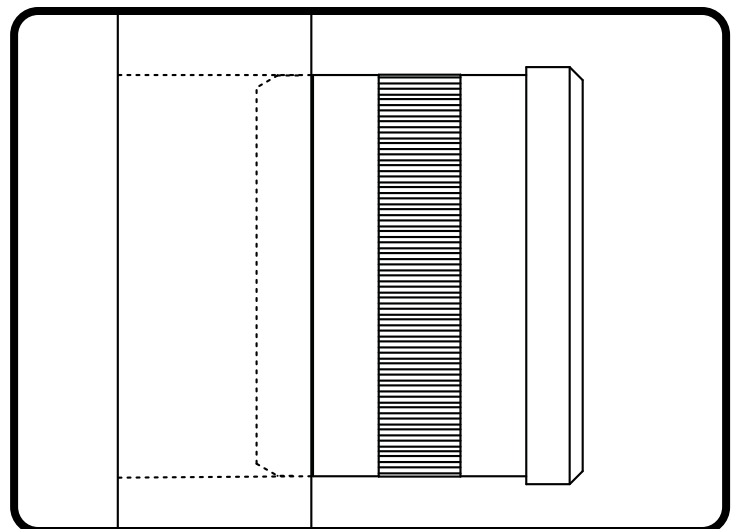


Figure 3

Bushing Installation

5. 12-BOLT REAR END ONLY: When installing the R-joint in a 12 bolt rear end, the 1 7/8" ID x 1" sleeve must be positioned in a specific orientation. The sleeve has a notch cut in each side of it. One side has a wide, shallow notch. The other side has a narrow, deep notch. The wide, shallow notch should be up against the bushing ear of the axle. The narrow, deep notch is for clearance of the axle housing. The deep notch will need to be positioned so that the housing isn't pushing against the sleeve, preventing it from sitting flat against the ear of the axle.

6. 12-BOLT ONLY: The 2 5/8" flat-sided washer is made with a FLAT in it to clear the axle housing while installing the r-joint housing. You will need to position the flat sided so it isn't hitting the axle housing. (Figure 6)

7. Snug down the nuts enough to hold the sleeve and washers in place, check for proper orientation of the installation tool, then tighten the nuts to press the bushing housing into the axle housing. Tighten the nuts until the housing bottoms in the axle mount.

8. Install the spacers in the R-Joint bushings by inserting the small side of the spacer into the center pivot ball. Push them in until they bottom out and stop (Figure 7).

9. Install your Ridetech StrongArms. Refer to the instructions supplied with the StrongArms.

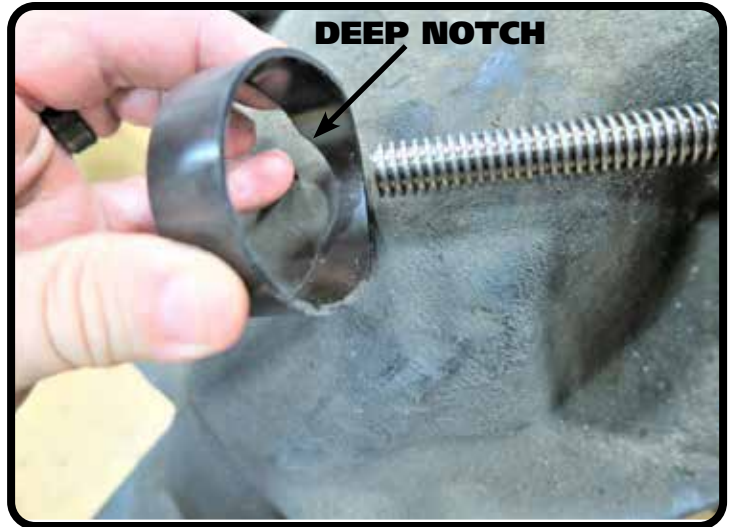


Figure 5

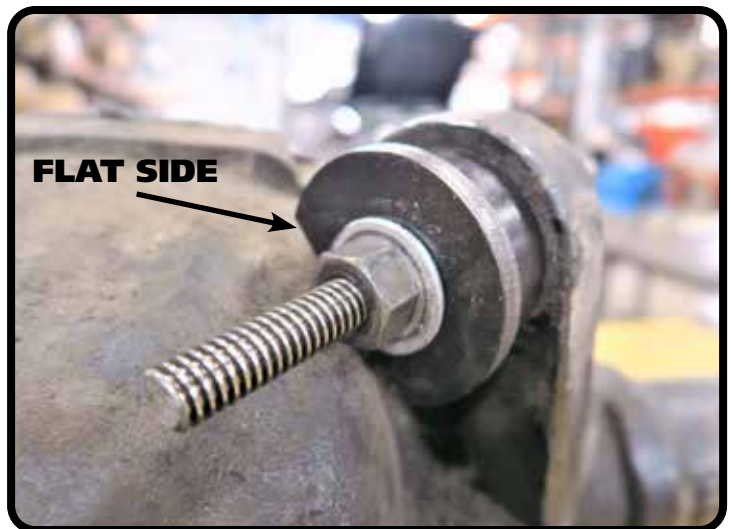


Figure 6

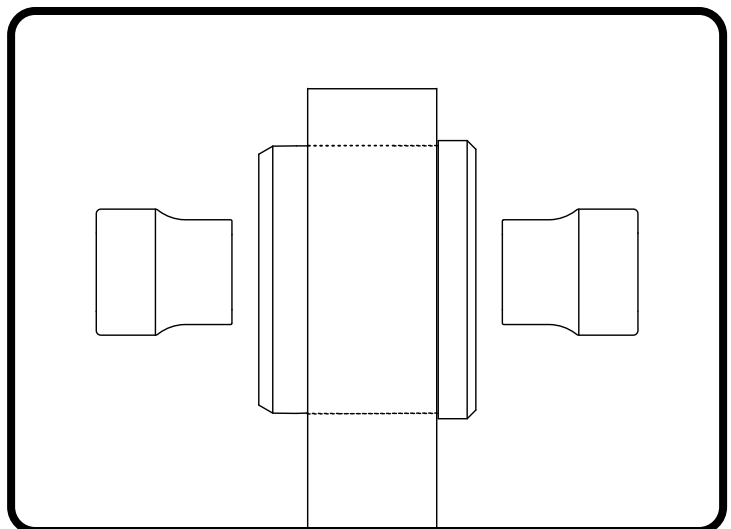


Figure 7