



**INSTALLATION
INSTRUCTIONS**



Part # 11236699



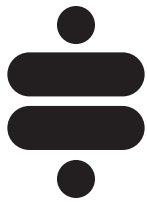
Rear Upper StrongArms

1964-1967 GM A-Body

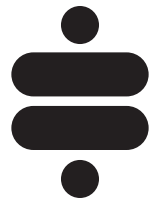


www.ridetech.com
812.482.2932





**Please Read And Understand All Instructions
And Warnings Prior To The Installation Of
This Product.**



THANK YOU

Congratulations on your new Ridetech product! It's an honor that you've selected the Ridetech brand to upgrade your ride. Our products are developed around quality and performance without compromise. We're confident you'll have many years (and miles) of pure driving enjoyment.
Thank you for choosing Ridetech!

Road Map

Parts Listing	3
StrongArm Installation	4

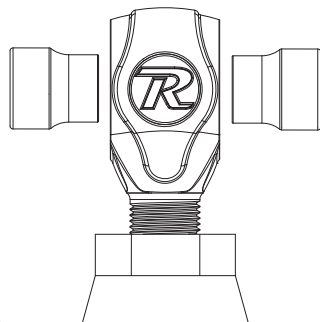
**NOTE:
WE RECOMMEND REPLACING THE BUSHINGS IN YOUR AXLE
HOUSING WITH RIDETECH AXLE HOUSING R-JOINTS.
PART NUMBER 11227298.**

PARTS LISTING

Part Number	Description	Qty	
90001116	Upper Control Arms (Set to 12.750")	2	
90001318	RH R-Joint Threaded Housing Assembly (Installed in bars)	2	
99752004	3/4" -16 Jam Nut (Installed on R-Joint End)	2	
70013784	R-Joint Spacers	4	
R-Joint Components - (Installed in R-Joint ends)			
70013275	R-Joint Center Ball	2	
70013276	R-Joint Composite Center Ball Cage	2	
70013279	Retaining Ring	2	
70013280	Wavo Wave Spring	2	
Hardware Kit: 99010096			
99501005	1/2" -13 x 3 1/2" Hex Bolt	Upper StrongArm	4
99502009	1/2" -13 Nylok Nut	Upper StrongArm	4
99503014	1/2" SAE Flat Washer	Upper StrongArm	4

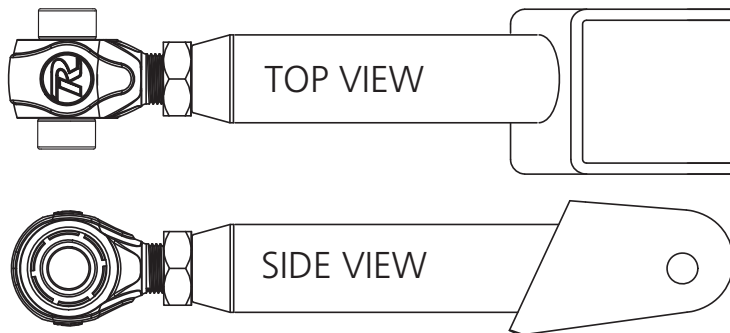
R-JOINT SPACER INSTALLATION

Install the spacers by inserting the SMALL side of the spacer into the center pivot ball. Push them in until they bottom out.



New R-Joints will be quite stiff (75-90 in/lbs breakaway torque) until they "break in" after a few miles of use. After the break-in period, they will move much more freely. Because the composite bearing race contains self lubricating ingredients, no additional lubrication is required. Any additional lubrication will only serve to attract more dirt and debris to the R-Joint and actually shorten its life.

STRONGARM ORIENTATION



THIS ILLUSTRATION SHOWS HOW THE UPPER STRONGARM IS TO BE INSTALLED IN YOUR A-BODY. BOTH UPPER STRONGARMS ARE OFFSET TO THE SAME SIDE. THIS DESIGN IS BASED OFF THE OEM CONTROL ARMS TO KEEP THE DIFFERENTIAL CENTERED.

Arm Installation

1. Remove the OEM upper control arm. Inspect the condition of the bushings in the axle housing. If necessary, we recommend replacing them with Ridetech Axle Housing R-joints #11227298 for bind free suspension movement. If you choose to install the Axle Housing R-Joints, install them before installing the new upper StrongArms. The length of the upper StrongArm should be set at 12.750". Ensure that the jam nut is tight. Insert the R-Joint Spacers into the R-Joint by installing the small end of the spacers into the R-Joint. Push them in until they bottom out.

2. Insert the R-Joint end of the upper StrongArm into the OEM mounting location, making sure the StrongArm is positioned correctly. Use the illustration on Page 3 to help determine the correct orientation. Line up the through hole of the R-joint with the upper control arm mounting holes. Insert a 1/2"-13 x 3 1/2" hex bolt through the holes. Install a 1/2" flat washer and 1/2"-13 nylok nut on the threads of the bolt sticking through the frame. Torque to **75 ftlbs**.

3. Slip the end of the upper Strongarm over the axle housing bushing. Line up the holes of the StrongArm with the through hole of the bushing. Insert a 1/2"-13 x 3 1/2" hex bolt through the holes. Install a 1/2" flat washer and 1/2"-13 nylok nut on the threads of the bolt sticking through the frame. If you are reusing the OEM rubber bushing, do not tighten until the car is sitting at ride height. If you have the axle housing R-Joint installed, you can tighten the hardware with the suspension hanging freely. Torque the hardware to **75 ftlbs**.

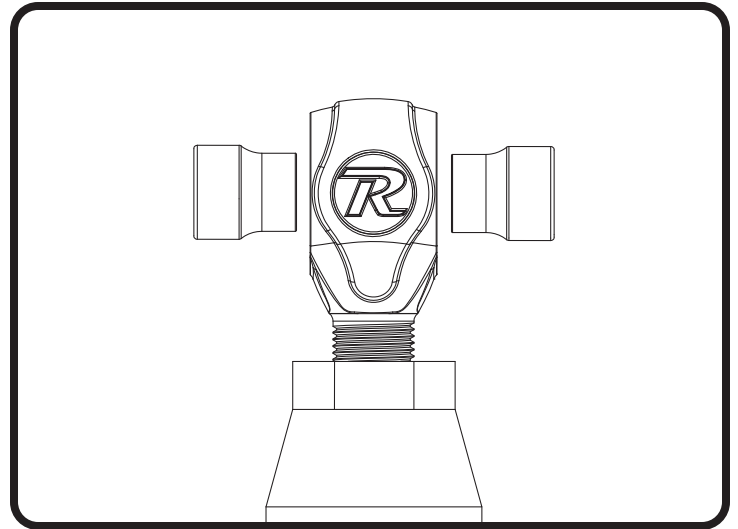
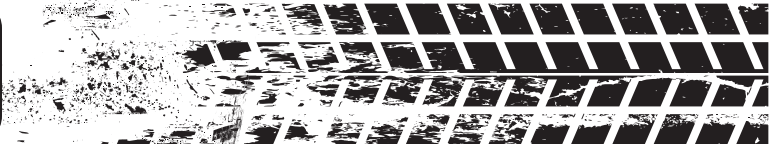


Figure 1



Figure 2



Figure 3