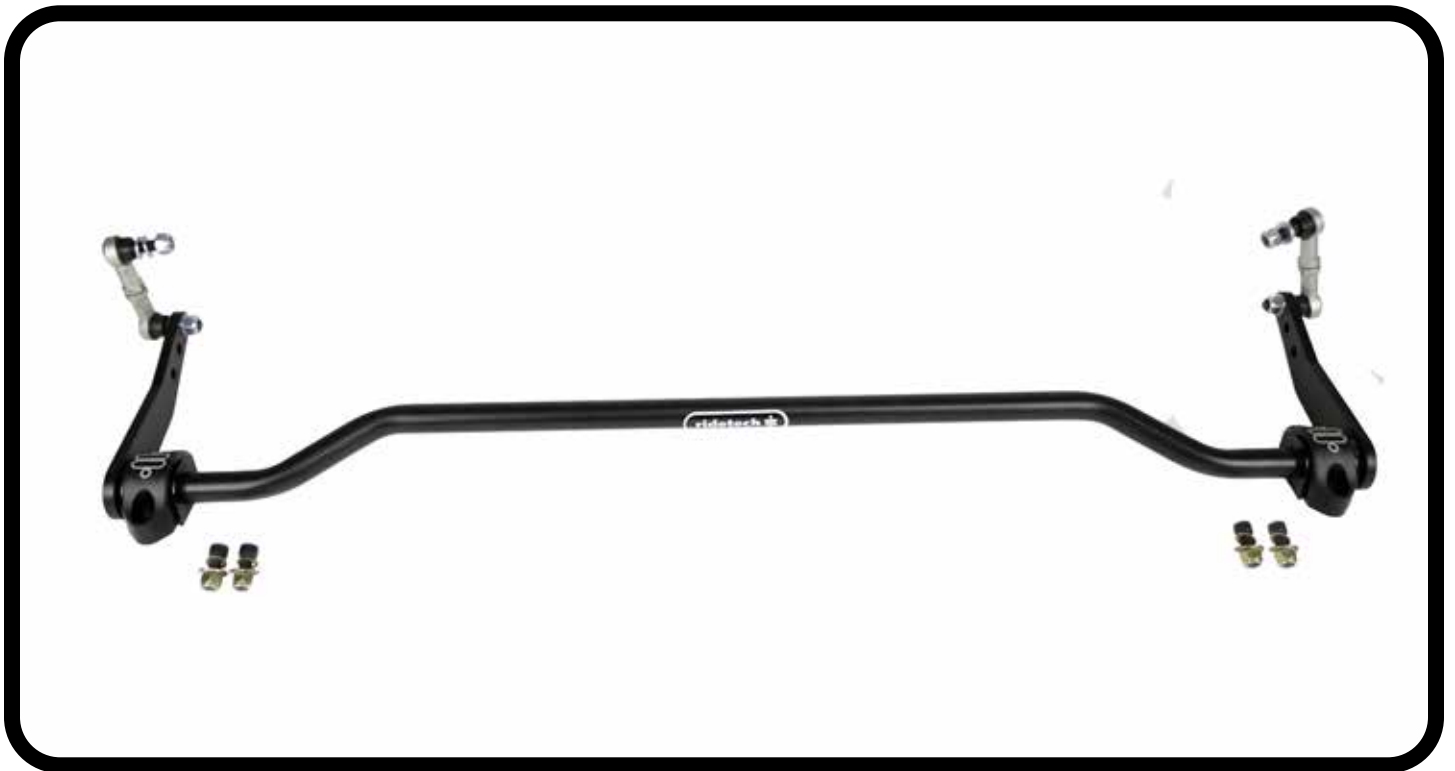




**INSTALLATION
INSTRUCTIONS**



Part # 11239106



Rear Sway Bar

1964-1967 GM A-Body w/MOMENTUM Chassis

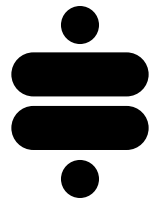


www.ridetech.com
812.482.2932





**Please Read And Understand All Instructions
And Warnings Prior To The Installation Of
This Product.**



THANK YOU

Congratulations on your new Ridetech product! It's an honor that you've selected the Ridetech brand to upgrade your ride. Our products are developed around quality and performance without compromise. We're confident you'll have many years (and miles) of pure driving enjoyment.
Thank you for choosing Ridetech!

Road Map

Parts Listing & Sway Bar Rates	3
Exploded View	4
Sway Bar Installation	5-6



**THIS SWAY BAR IS DESIGNED TO ONLY BE COMPATIBLE
WITH THE RIDETECH 64-67 A-BODY CHASSIS.**



**NOTE: The bushings in this kit contain an anti-friction lining.
No lubrication is required.**

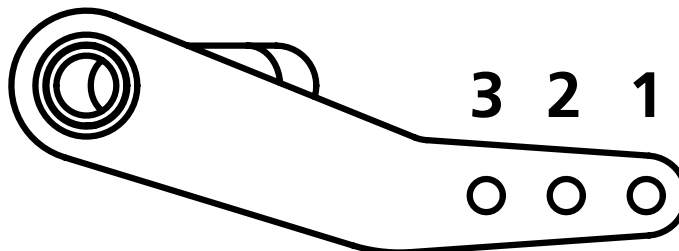
PARTS LISTING & SWAY BAR RATINGS

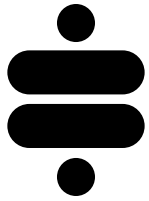
ITEM #	PART #	DESCRIPTION	QTY
REAR SWAY BAR: 11239106			
1	90003940	64-67 A-BODY CHASSIS REAR SWAY BAR ASSEMBLY	1
2	90001344	SWAY BAR MOUNT	2
3	70015012	SWAY BAR BUSHING (1" ID)	2
4	90003842	10MM 90 DEGREE END LINK	4
5	99115001	M10 X 1.5 THREADED STUD	2
6	90002275	10MM COPPER CRUSH WASHER	2

REAR SWAY BAR HARDWARE KIT - 99010282			
ITEM #	PART #	DESCRIPTION	QTY
REAR SWAY BAR			
7	99112002	M10-1.5 NYLOK NUT	4
8	99373003	3/8 SAE FLAT WASHER	8
9	99371034	3/8-16 X 1 SHCS	4
10	99373020	3/8 X 5/8 OD WASHER	4
11	99372001	3/8-16 NYLOK NUT	4

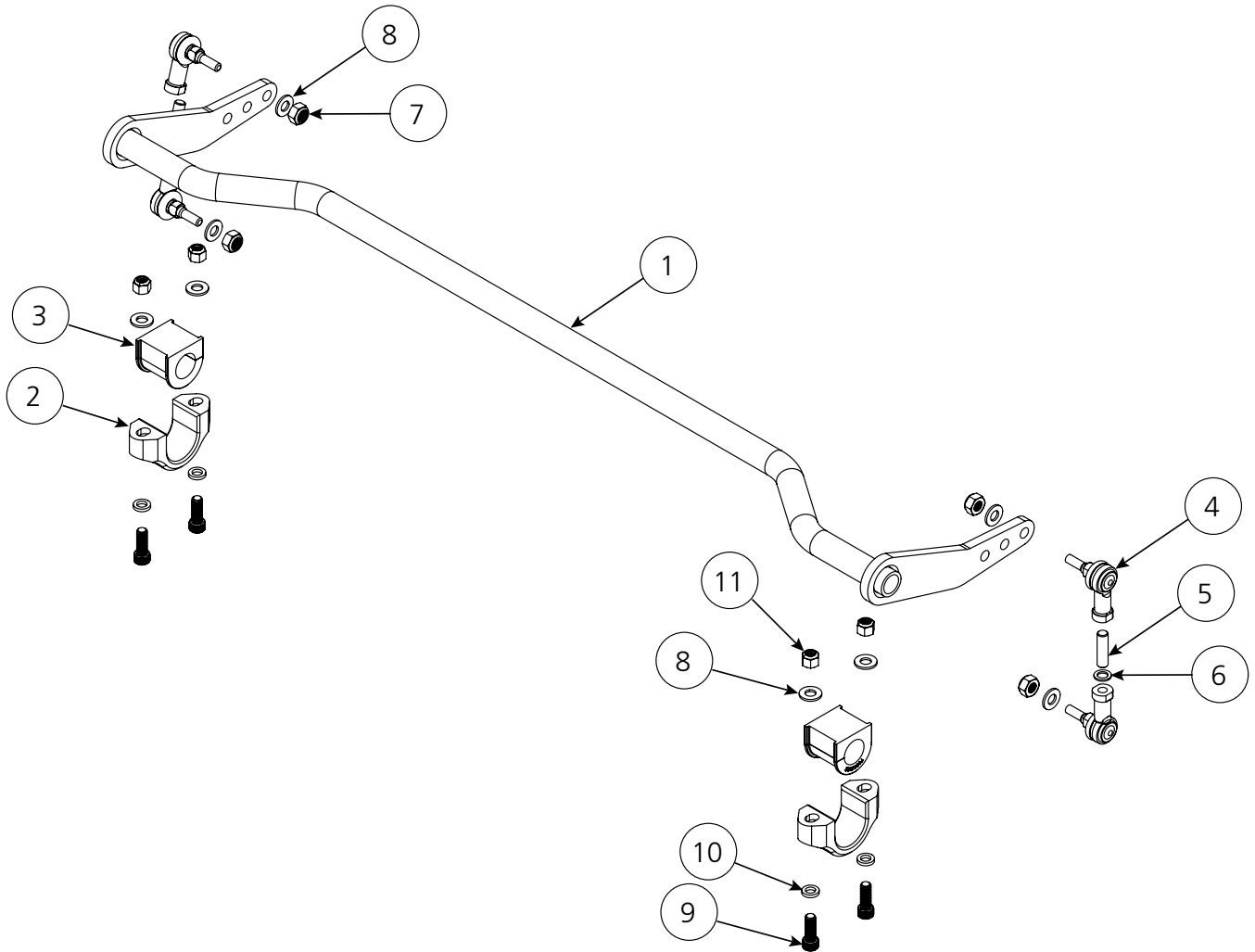
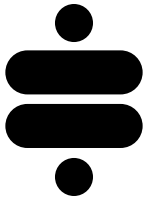
This sway bar features 3 tuning positions to help optimize your car's handling. See the chart and illustration below for hole locations and their associated stiffness rating. We encourage you to drive the car at each position to experience the change in handling characteristics and dial in your preferred setting.

Sway Bar Rates	
Position	Rate (lb/in)
1	350
2	475
3	650





EXPLODED VIEWS



Sway Bar Installation

1. Raise the vehicle to a safe and comfortable working height.

2. Spread open each bushing and install onto the bar. Then slide a billet strap over each bushing (Figure 1).

Position them approximately a couple inches from each arm as shown in Figure 2.

3. Position the bar on the mounting brackets on the bottom of the frame rail (Figure 3).

A second set of hands may be helpful here.

4. Place a 3/8" ID x 5/8" OD Flat Washer on each of (4) 3/8"-16 x 1" Socket-Head Bolts. Line up the holes in the sway bar mounting straps with the holes in the mounting bracket on the frame and insert a bolt into the machined recess of each strap (Figure 4).

5. Place a 3/8" washer and 3/8"-16 nylock nut on each of the sway bar strap bolts.

Torque to **30 ft-lbs.**



Figure 1

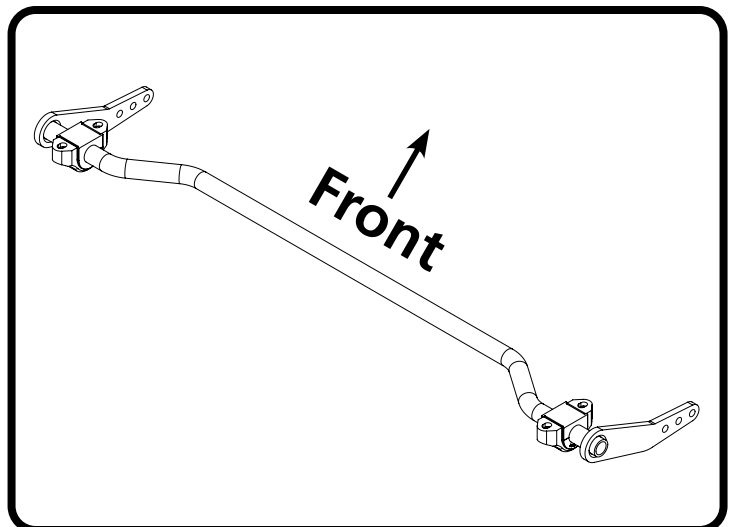


Figure 2



Figure 4



Figure 3

Sway Bar Installation

6. Install a 3/8" flat washer on each of the end link studs (Figure 5).

7. Install one end of a pre-assembled end link into the axle tab, and the other end into one of holes of the sway bar arm. See the chart on page 3 for each hole's stiffness rating. We recommend starting at hole #1 and tuning from there (Figure 6).

8. Once both end links are in position, install a 3/8" flat washer and M10 Nylok nut on each of the end link studs and torque to **37 ft-lbs** (Figures 7-8).

Repeat steps 6-8 on the opposite side.



Figure 5



Figure 6



Figure 8



Figure 7