



Part # 11330196

Part # 11330196 - 1963-1972 C10/C15 Air Suspension System

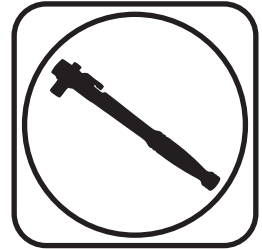
Recommended Tools

Front Components:

11331013 Front CoolRide with RQ-S Series Shocks

Rear Components:

11334013 Rear CoolRide with RQ-S Series Shocks



1963-1972 C10/C15 Air Suspension Installation Instructions

Table of contents

Pages	2-6.....	Front CoolRide
Pages	7-9.....	Rear CoolRide
Pages	10-11.....	Shock Adjustment

THIS COOLRIDE KIT IS DESIGNED TO BE USED WITH OEM CONTROL ARMS AND REAR TRAILING ARMS.





Part # 11331013

1963-1987 C10/C15 FRONT CoolRide Air Spring Kit for OEM Control Arms



Recommended Tools



1963-1987 C10/C15 Front CoolRide Air Spring Kit

Installation Instructions

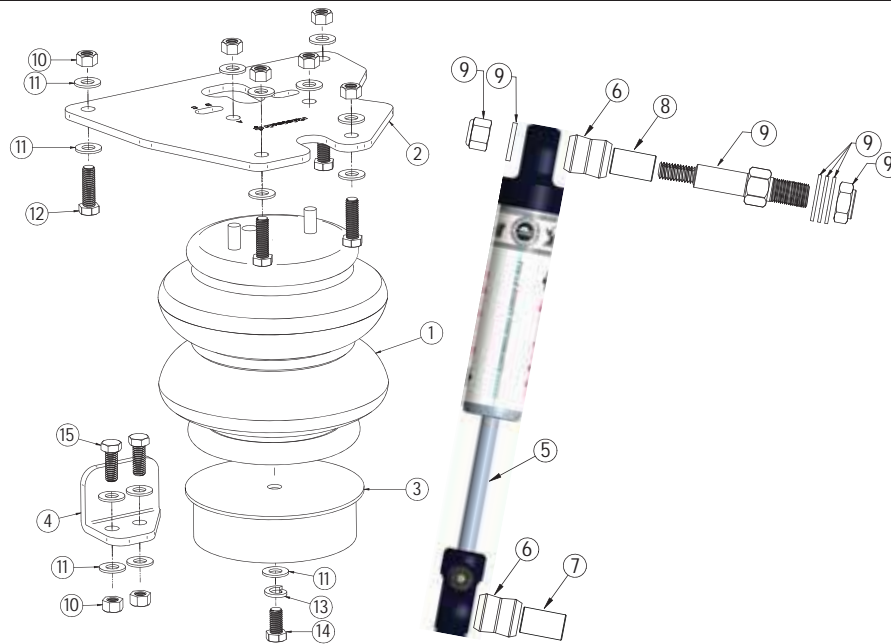
Table of contents
Page 3..... CoolRide Kit Components & Hardware List
Page 4..... Getting Started
Page 5-6..... Installing CoolRide

THIS COOLRIDE KIT IS DESIGNED TO BE USED WITH OEM CONTROL ARMS AND RIDETECH RQ-S SERIES SHOCKS.



CoolRide Kit ComponentsIn the box

Item #	Part Number	Description	QTY
1	90006873	8" Diameter Air Spring	2
2	90000060	Upper Air Spring Plate	2
3	90000057	Lower Air Spring Cup Bracket	2
4	90000293	Steering Stop - Driver - Shown	1
4	90000294	Steering Stop - Passenger	1
5	20439999	3.85" Stroke RQ-S Series Shock	2
6	70011138	3/4" ID Shock Bushing	2
7	90002102	1/2" ID Bushing Sleeve	2
8	90002103	5/8" ID Bushing Sleeve	2
9	90001617	Shock Stud	2



CoolRide Hardware.....In the box

Item #	Part Number	Description	QTY	Item #	Part Number	Description	QTY
UPPER AIR SPRING MOUNTING				STEERING STOP			
10	99372002	3/8-16 Nylok Nut	12	10	99372002	3/8-16 Nylok Nut	4
11	99373003	3/8 SAE Flat Washer	20	11	99373003	3/8" SAE Flat Washer	8
12	99371004	3/8-16 X 1 1/4" Hex Bolt	8	15	99371003	3/8"-16 X 1" Hex Bolt	4
LOWER AIR SPRING PLATE							
11	99373003	3/8 SAE Flat Washer	2				
13	99373005	3/8 Split Lock Washer	2				
14	99371001	3/8-16 X 3/4" Hex Bolt	2				



Getting Started.....

1. Raise and support truck at a safe, comfortable working height. Let the front suspension hang freely
2. Remove coil spring and shock absorber. Refer to factory service manual for proper disassembly procedure.
3. Apply thread sealant to the air fitting and screw it into the top of the air spring.

Installing CoolRide



4. Hold the upper plate to the cross member as shown in the picture to the left and clamp to frame. Using the plate as a template drill 4 holes in the cross member.



5. Apply thread sealant to the air fitting and thread into the air spring. Remove the upper plate from the frame and place onto the studs on the top of the air spring. The holes are lettered; slide the plate to position B moving the air spring to the rear of the vehicle. Secure with 3/8" flat washers and 3/8"-16 nyloc nuts Torque the nuts 15-20 ft-lbs. Route airline.



Installing CoolRide



6. Use a drill to drill the spot welds out of the OEM bumpstop/steering stop. Just drill through the mount. Do NOT drill through the control arm. We recommend cleaning the area up after removing it and paint it to keep the area from rusting.



7. Use the Image as a reference for placing the steering stop. It should be parallel with the rear edge of the control arm. You want the steering stop of the spindle to hit the steering stop before the steering box hits the internal stop. Use the stop as a template to drill (2) 3/8" holes in the control arm. Attach the stop using (2) 3/8"-16 x 1" bolts, (4) 3/8" flat washers, & (2) 3/8"-16 nylok nuts. Torque to 30 ft-lbs.



8. Bolt the lower bracket to the air spring using a 3/8"-16 x 3/4" hex bolt, 3/8" split lock washer and flat washer. Torque the bolts 15-20 ft-lbs.



Installing CoolRide



9. Attach the air spring assembly to the frame using 3/8" x 1 1/4" bolts, Nylok nuts and flat washers supplied. The lower mount will simply sit in the coil spring pocket. It does not need to be attached. Bolt the frame hardware to 30 ft-lbs.

10. Replace the factory shock, with Ridetech HQ Series Shock supplied in this kit. This kit includes a new shock stud for the frame.

11. Check air spring clearance with the caliper at full lock. The air spring should be about 5" tall at ride height.

DO NOT ALLOW THE AIR SPRING TO RUB. THIS WILL DAMAGE THE AIR SPRING AND IS NOT A WARRANTABLE SITUATION.

Part # 11334013

1963-1972 C10/C15 Rear CoolRide Kit for OEM Trailing Arms w/RQ-S Series Shocks



Recommended Tools



1963-1972 C10/C15 Rear CoolRide Kit

Installation Instructions

Table of contents

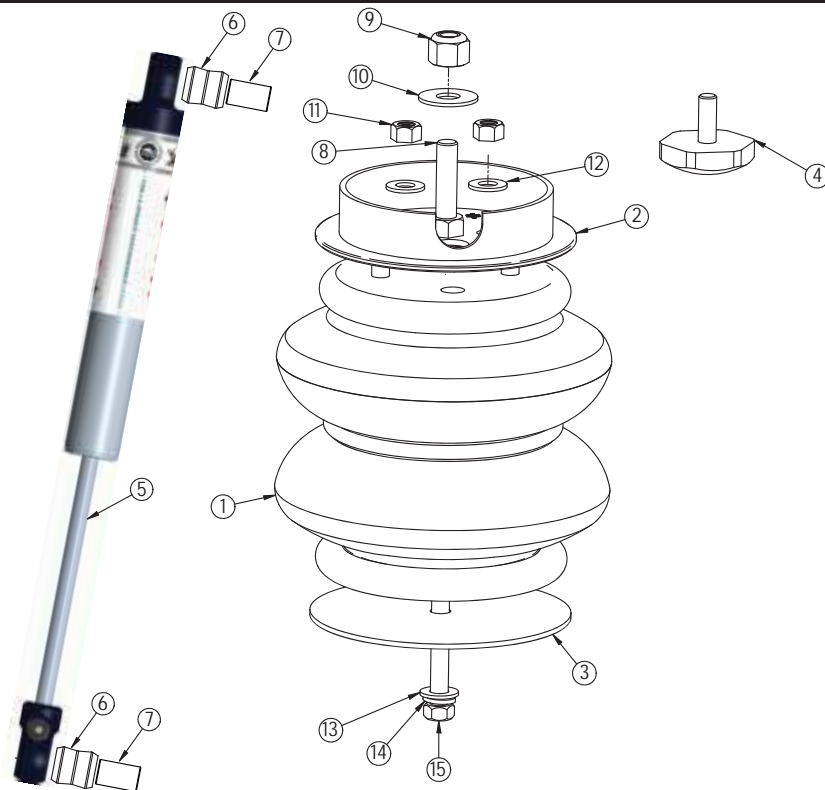
- Page 8..... CoolRide Kit Components & Hardware List
- Page 9..... Getting Started
- Page 9..... Installing CoolRide
- Page 10-11.. Shock Adjustment

THIS COOLRIDE KIT IS DESIGNED TO BE USED WITH OEM TRAILING ARMS.



CoolRide Kit ComponentsIn the box

Item #	Part Number	Description	QTY
1	90006781	6.5" Diameter Air Spring	2
2	90000056	Upper Air Spring Cup Bracket	2
3	90000070	Lower Air Spring Plate	2
4	90001082	Short Bumpstop	2
5	20469999	5.76" Stroke RQ-S Series Shock	2
6	70011138	3/4" ID Shock Bushing	2
7	90002102	1/2" ID Shock Sleeve	2



CoolRide Hardware.....In the box

Item #	Part Number	Description	QTY	Item #	Part Number	Description	QTY
UPPER AIR SPRING MOUNTING				LOWER AIR SPRING PLATE			
8	99435003	7/16"-14 x 2" Stud	2	13	99373003	3/8" Fender Washer	2
9	99432001	7/16"-14 Nylok Nut	2	14	99373005	3/8" Split Lock Washer	2
10	99433002	7/16" SAE Flat Washer	2	15	99371009	3/8"-16 X 4" Hex Bolt	2
11	99372002	3/8-16 Nylok Nut	4				
12	99373003	3/8 SAE Flat Washer	4				



Getting Started.....

1. Raise and support truck at a safe, comfortable working height. Let the front suspension hang freely
2. Remove coil spring and shock absorber. Refer to factory service manual for proper disassembly procedure.
3. Apply thread sealant to the air fitting and screw it into the top of the air spring.

Installing CoolRide

4.



4. Place the upper mount over the studs on the air spring. Secure with two 3/8" Nylok nuts and flat washers. Torque the nuts 15-20 ft-lbs. Screw the 7/16 x 2" stud into the nut in the bottom of the bracket.

5. Bolt the assembly to the upper coil spring pocket with the stud sticking through the frame. Use a 7/16" nut and flat washer to fasten the assembly. Tighten the nut enough to hold the airspring/cup solidly in place. Image "A" shows the air spring in position.

6. Bolt the bottom of the air spring to the trailing arm using a 3/8" x 4" bolt, fender washer and lock washer. The lower air spring plate must be installed between the air spring and the trailing arm. Torque the bolt 15-20 ft-lbs.

7. Double check air spring clearance though full suspension travel.

8. Ride height on this air spring is approximately 5".

9. Install the Ridetech shock in place of the OEM shock. Torque the shock hardware to 75 ft-lbs.



A.

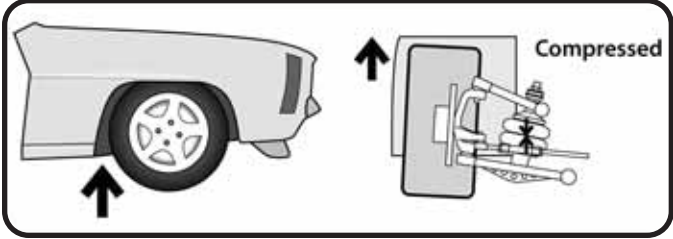


TUNING GUIDE

SINGLE-ADJUSTABLE SHOCKS

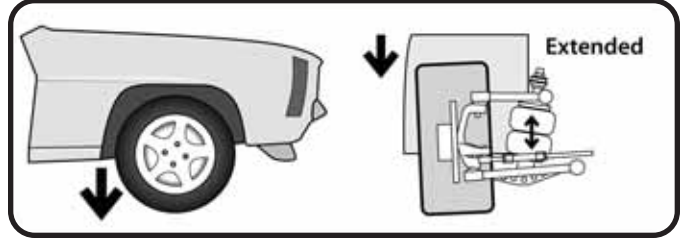


The Basics...



COMPRESSION

This typically occurs when you hit a bump in the road. The bump forces the wheel/tire/suspension assembly to "compress" or move upwards into the car.



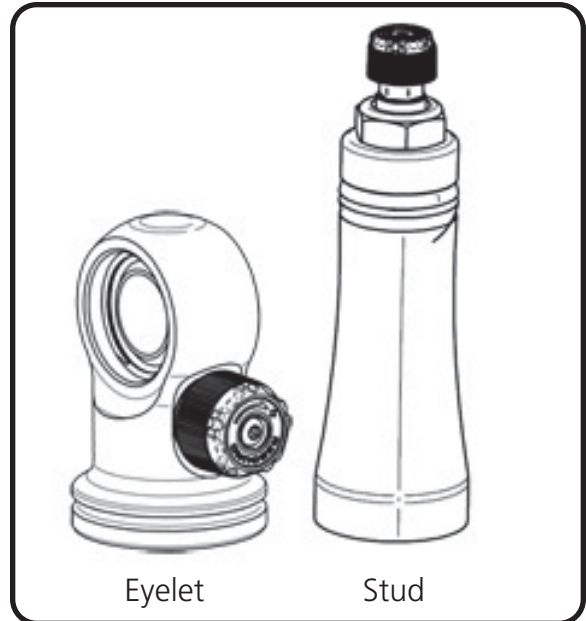
REBOUND

Rebound is the opposite of compression. This occurs when the wheel/tire/suspension assembly falls into a pothole, or simply "rebounds" from being compressed.

Where Are The Knobs?

RQ-S Series Shocks

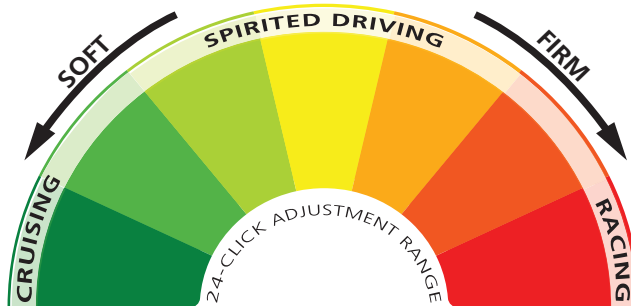
- The adjustment knob is located on the top of the shock, either protruding from the side of the eyelet, or atop the stud.
- This knob provides rebound adjustment only.



Knob Function

Counterclockwise

=
Softer



Clockwise

=
Firmer





TUNING GUIDE

SINGLE-ADJUSTABLE SHOCKS



Initial Rebound Setting

NOTE: Before jumping straight to a middle-of-the-road shock setting, we recommend you experience the full range of adjustment potential of your new shocks by first driving your vehicle at both the “full stiff” and “full soft” settings. Understanding how your shocks behave at these extremes will provide recognizable reference points as you attempt to dial in your settings.

1. Begin by setting your shocks to the “full stiff”, or minimal rebound position. You do this by turning the adjustment knob clockwise until it stops.

2. Now turn the adjustment knob counterclockwise 12 clicks. This is the approximate center of the adjustment range.

3. Take the vehicle for a test drive. Try to determine if you are experiencing any of the unwanted behaviors found at the extremes of the adjustment range. If you are satisfied with the ride quality and handling, you’re all set. Enjoy the ride!

4. If the vehicle feels too “floaty” or soft, turn the knob a few clicks clockwise to increase the damping effect.

If the ride quality is still too harsh or stiff, turn the knob a few more clicks counterclockwise to decrease the damping effect.

5. Take the vehicle for another test drive. If necessary, repeat the steps above until your desired optimal ride quality has been achieved.



General Guidelines

- The rear shocks typically have the most influence on ride quality. This is due to your seating position being closer to the rear than the front.
- Adjustments to the front shocks will generally require 3-4 clicks in any direction to be noticeable, while adjustments to the rear shocks may only require 1-2 clicks to be felt.
- Don’t be afraid to turn the knobs and experience the full adjustment range. You are not going to hurt anything and you can always go back if you adjust too far one way or the other.