



## INSTALLATION INSTRUCTIONS



**Part # 11343699 / 11353699 / 11363699**



### CoolRide Front Upper StrongArms

**1963-1970 C-10**

**1971-1972 C-10**

**1973-1987 C-10**

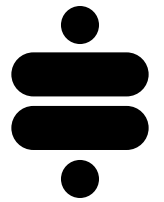


[www.ridetech.com](http://www.ridetech.com)  
812.482.2932





**Please Read And Understand All Instructions  
And Warnings Prior To The Installation Of  
This Product.**



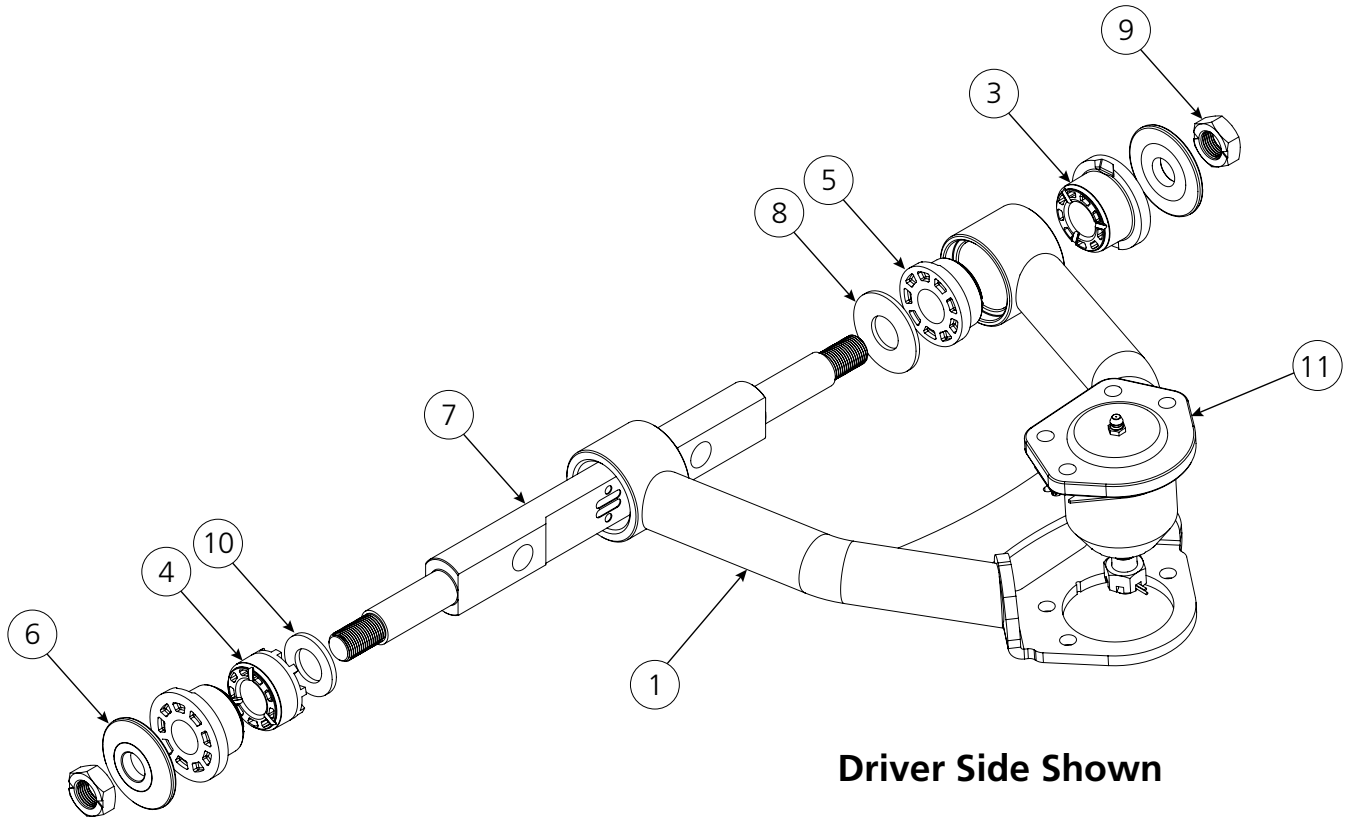
**THANK YOU**

Congratulations on your new ridetech product! It's an honor that you've selected the ridetech brand to upgrade your ride. Our products are developed around quality and performance without compromise. We're confident you'll have many years (and miles) of pure driving enjoyment.  
Thank you for choosing ridetech!

### **Road Map**

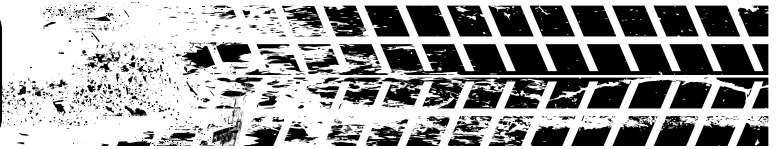
<b>Exploded View &amp; Parts Listing</b>	<b>3</b>
<b>Control Arm Installation</b>	<b>4-5</b>

# EXPLODED VIEWS AND PARTS LISTING



ITEM #	PART #	DESCRIPTION	QTY
1	90003638	63-87 C10 UCA DRIVER (SHOWN)	1
2	90003639	63-87 C10 UCA PASSENGER	1
3	70010759	Delrin Bushing, 2.0" Large OD	4
4	70010826	Delrin Bushing, 1.5" Large OD	2
5	70010827	Delrin Bushing, 1.750" Large OD	2
6	90002737	Alum Washer - Upper Strong Arm	4
7	90003640	63-87 C10 UCA CROSS SHAFT	2
8	90003934	WASHER; 1.700D	2
9	99622005	5/8-18 THIN TOP LCKNUT	4
10	90003933	WASHER; 1.450D	2
11	90000911	63-70 Upper Ball Joint Assembly	2
	90000902	71-72 Upper Ball Joint Assembly	
	90000910	73-87 Upper Ball Joint Assembly	

# Control Arm Installation



**NOTE:** 63-87 C-10's have similar control arms through the year range, but with varying ball joints. See the table below for the ball joint part numbers and their corresponding year ranges. Be sure to use the correct ball joint for the year range of the spindle you are using.

C-10 BALL JOINTS		
Year Range	Upper	Lower
63-70	90000911	90000912
71-72	90000902	90000909
73-87	90000910	90000909

**1.** Install the ball joints in the upper control arms using the supplied hardware. The ball joint is installed from the top of the arm (stem point down). See Figure 1.



Figure 1

**2.** Torque the ball joint hardware to **20 ft-lbs** and install the grease zerk (Figure 2).



Figure 2

## Control Arm Installation

**3.** Position the arm on the existing mounting studs (Figure 3). You may reuse the existing alignment shims.

Ensure you have the correct arm on the correct side. The position of the ball joint should be offset to the front of the vehicle. See Figure 4.

**4.** Fasten the arms to the frame using the OEM hardware (Figure 5).

Torque the mounting nuts to **70 ft-lbs.**

Torque the cross-shaft nuts to **55 ft-lbs.**

**5.** Attach the upper ball joint to the spindle and torque the castle nut to **50 ft-lbs.** Insert and bend the cotter pin.

**6.** Grease the upper ball joints.

**NOTE:** Do not forget to have the vehicle aligned.



Figure 3

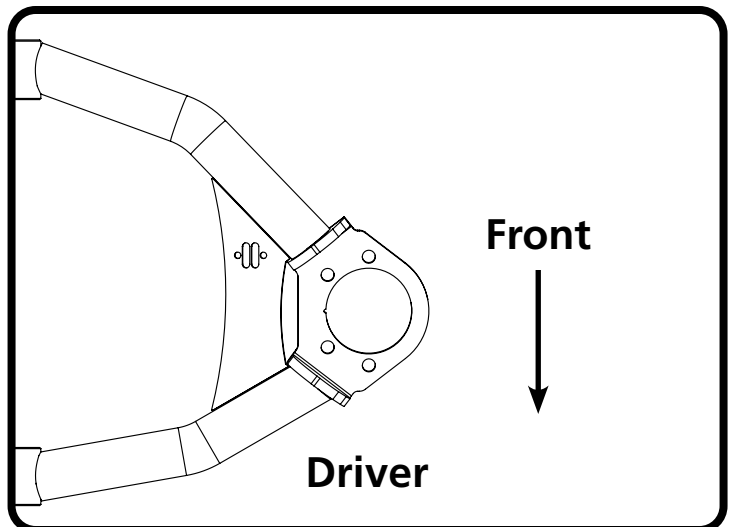


Figure 4



Figure 5