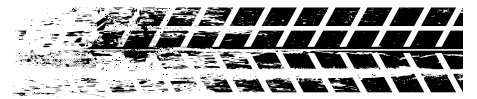
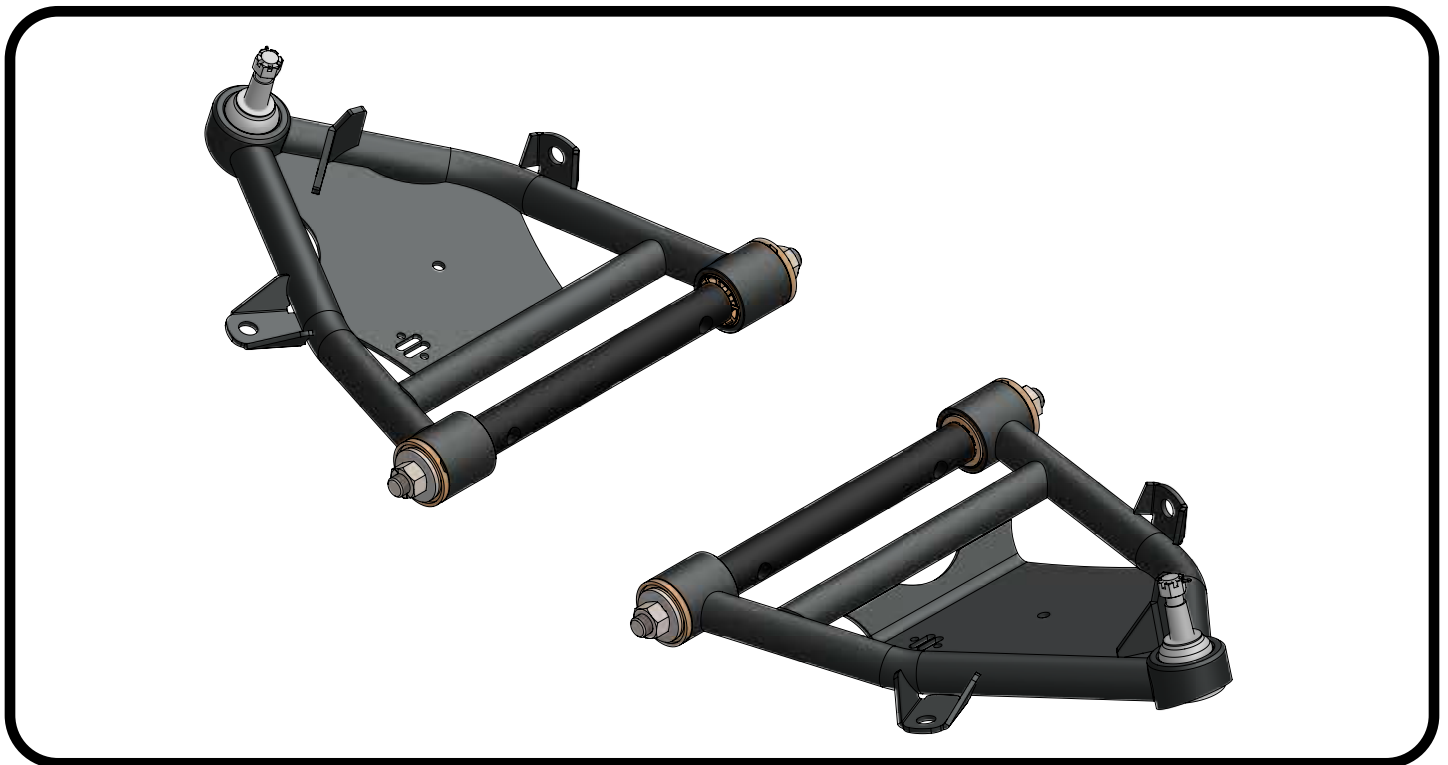




INSTALLATION INSTRUCTIONS



Part # 11341499 / 11351499



CoolRide Front Lower StrongArms

1963-1970 C10

1971-1987 C10

NOTE: These control arms are designed to be used with Ridetech shocks and Musclebar sway bar.

The factory shocks and sway bar are not compatible.

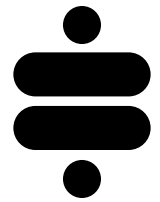


www.ridetech.com
812.482.2932





**Please Read And Understand All Instructions
And Warnings Prior To The Installation Of
This Product.**



THANK YOU

Congratulations on your new Ridetech product! It's an honor that you've selected the Ridetech brand to upgrade your ride. Our products are developed around quality and performance without compromise. We're confident you'll have many years (and miles) of pure driving enjoyment.
Thank you for choosing Ridetech!

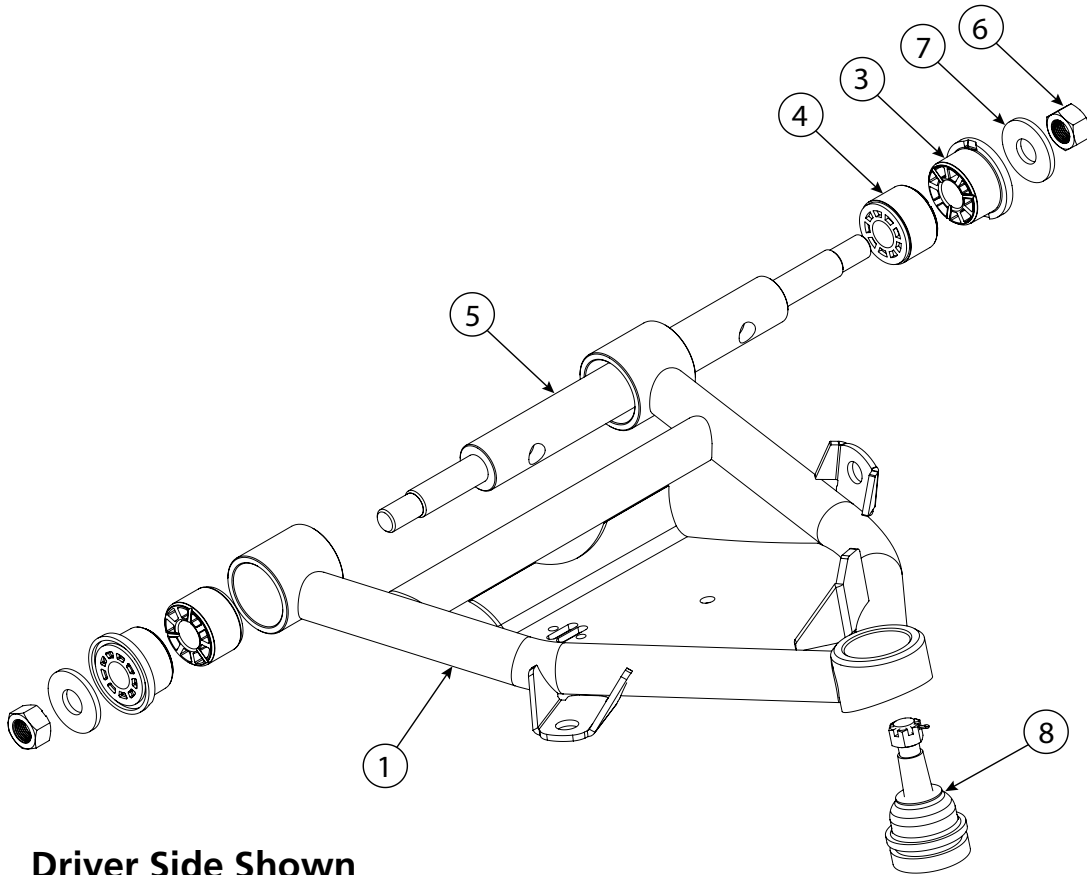
Road Map

Exploded Views & Parts Listing	3
Control Arm Installation	4-5

NOTE: 63-87 C-10's have similar control arms through the year range, but with varying ball joints. See the table below for the ball joint part numbers and their corresponding year ranges. Be sure to use the correct ball joint for the year range of the spindle you are using.

C-10 BALL JOINTS		
Year Range	Upper	Lower
63-70	90000911	90000912
71-72	90000902	90000909
73-87	90000910	90000909

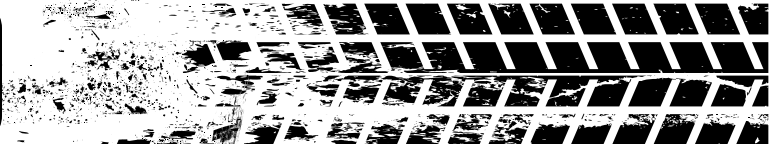
EXPLODED VIEWS AND PARTS LISTING



Driver Side Shown

ITEM #	PART #	DESCRIPTION	QTY
1	90003643	63-87 C10 COOLRIDE LCA DRIVER (SHOWN)	1
2	90003644	63-87 C10 COOLRIDE LCA PASSENGER	1
3	70010755	Delrin Bushing, 2.5" Large OD	4
4	70011465	Delrin Bushing, 2.05" OD	4
5	90002430	Cross Shaft	2
6	99752005	3/4"-16 Locknut	4
7	99753001	3/4" USS Flat Washer	4
8	90000912	63-70 Lower Ball Joint Assembly	2
	90000909	71-87 Lower Ball Joint Assembly	

Control Arm Installation



1. Raise the vehicle to a safe and comfortable working height.
2. Remove the existing lower control arms. Retain the existing U-bolts and nuts for reassembly.

If you are also going to be replacing the upper control arms, this is a good time to remove those as well. Refer to the factory service manual for the proper disassembly procedure.

3. Ensure you are installing the arm in the correct orientation. The ball joint pin should pointing up and the sway bar tab should be to the front of the truck. See Figure 1.

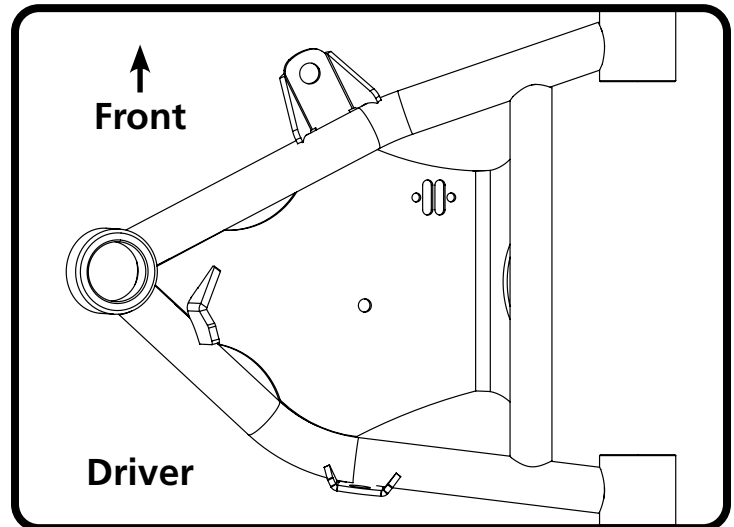


Figure 1

4. The lower control arm is installed using the factory u-bolts and nuts. The lower control arm is located with a pin that is in the center of the front u-bolt cradle (Figure 2). This pin will go into the hole in the control arm cross shaft to help locate the control arm.



Figure 2

NOTE: We have encountered some trucks where the locator pin is in the rear U-bolt cradle. It will still locate the control arm correctly.

5. The lower control arm cross shaft has 2 different locating-hole patterns. The arms in this particular kit use the 8.706" center-to-center locating holes (Figure 3).

The pin shown in Figure 2 will locate into these holes.

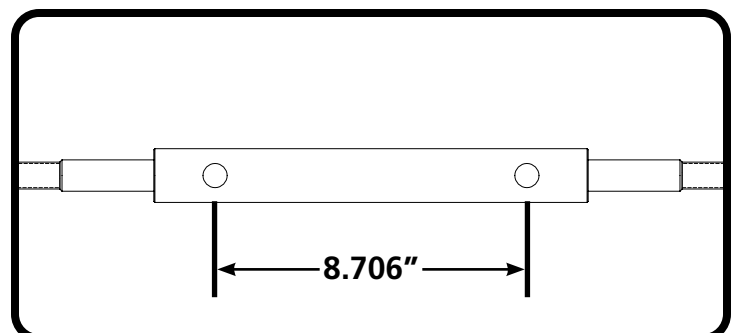


Figure 3

Control Arm Installation

6. Use the OEM hardware to attach the lower control arm as shown in Figure 4. Ensure the locating pin is in the 8.706" center-to-center holes.

7. Install a 3/4" flat washer and 3/4"-16 Nylok nut on each end of the cross shaft (Figure 5).

Torque to **90 ft-lbs.**

Repeat on the opposite side.



Figure 4



Figure 5

Suggested Alignment Specs For Street Driving

Camber: -.5 Degrees

Caster: +3.0 to +5.0 Degrees

Toe: 1/16" - 1/8" Toe In

Torque Specifications

Control Arm Cross Shaft	90 ft-lbs
Control Arm U-Bolts	45 ft-lbs
Ball Joint Nut	90 ft-lbs