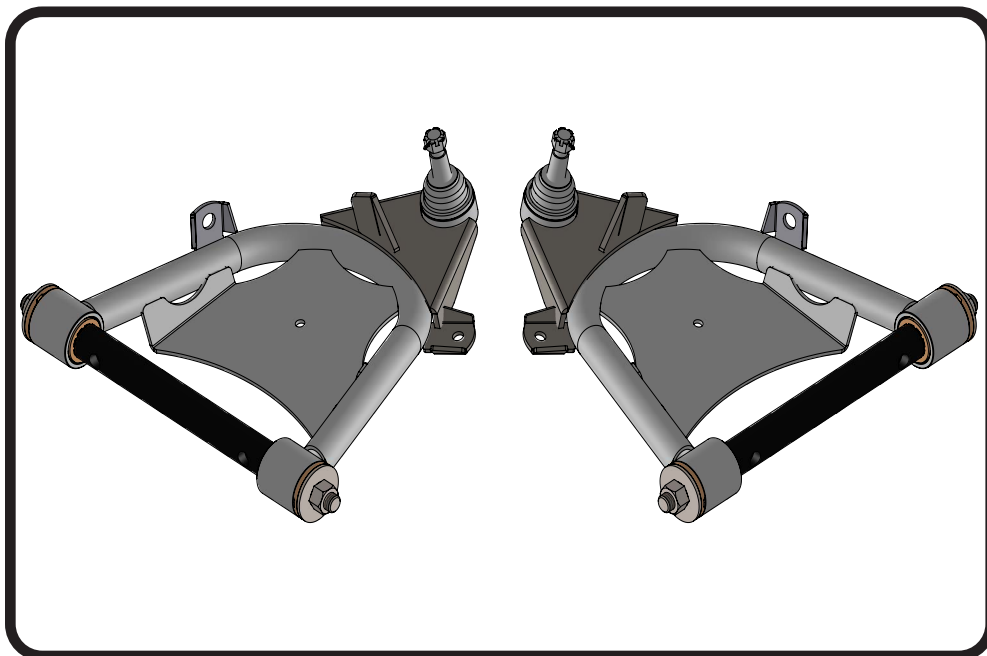
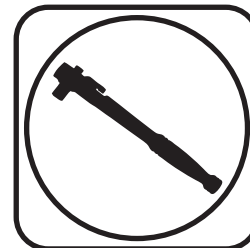
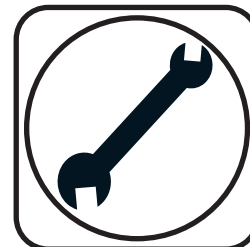




C10 CoolRide StrongArms

Part # **11341499**(63-70)/**11351499**(71-87)

Recommended Tools



C-10 CoolRide Lower StrongArms Installation Instructions

Table of contents

Page 2..... Included components

Page 3..... Installation

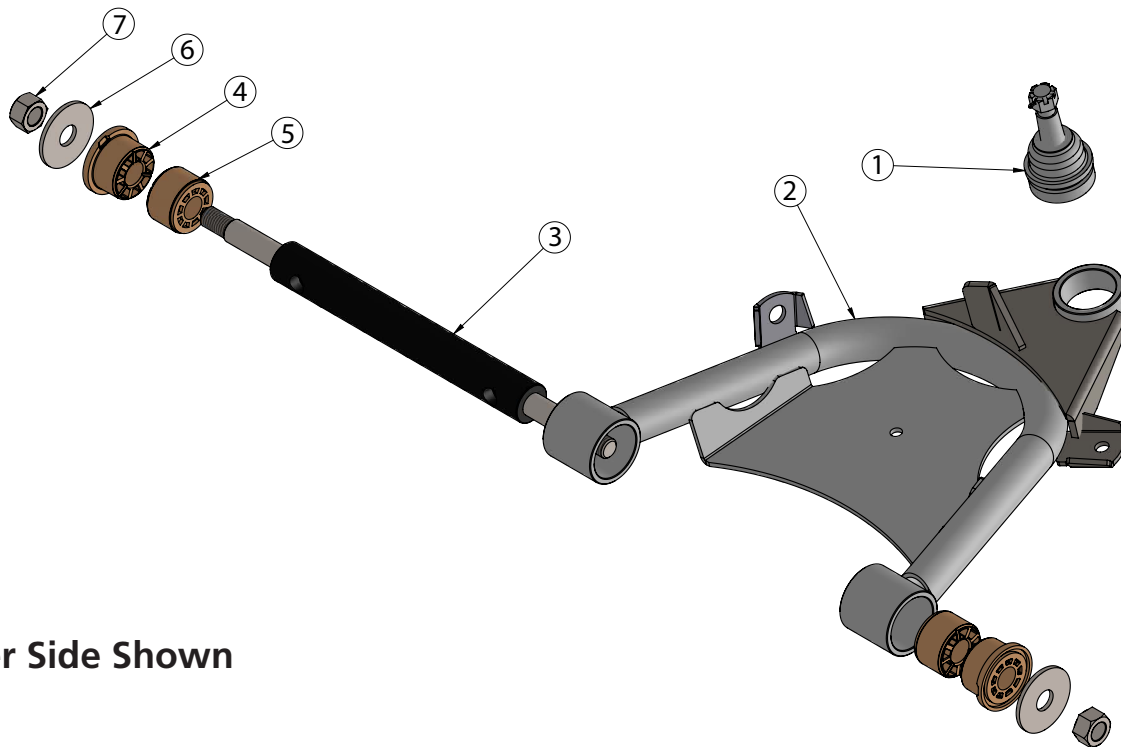
Note: These control arms were designed for use with the Ridetech bolt-on shock kit & MuscleBar swaybar. The factory shocks and sway bar will not work.





Lower Control Arm ComponentsIn the box

Item #	Part Number	Description	QTY
1	90000912/90000909	(63-70/73-87) - Lower Ball joint Assembly	2
2	90003152	Driver Lower Control Arm (Shown)	1
2	90003153	Passenger Lower Control Arm	1
3	90002430	Lower Control Arm Shaft	2
4	70010755	Control Arm Bushing - 2.5" OD Ledge	4
5	70011465	Control Arm Bushing - No Ledge	4
6	99753001	3/4" USS Flat Washer	4
7	99752005	3/4"-16 Top Lock Nut	4



Driver Side Shown

Getting Started.....

Note: The 63-87 C-10's have similar control arms through the years, but the balljoints used were different. The year breaks are as follows: 63-70, 71-72, 73-87. Be sure to use the correct balljoint for the year of spindle you are using.

Balljoints:	Ridetech#	Proforged#	Ridetech#	Proforged#
63-70:	Upper-90000911	101-10037	Lower-90000912	101-10036
71-72:	Upper-90000902	101-10044	Lower-90000909	101-10040
73-87:	Upper-90000910	101-10046	Lower-90000909	101-10040

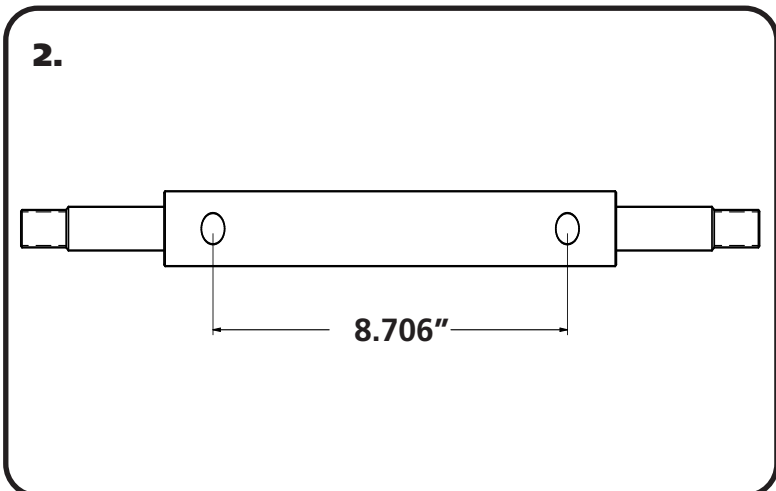


Installing Lower Control Arm



1. The lower control arm is installed using the factory U-bolts and nuts. The lower control arm is located by a pin that is in the center of the front u-bolt cradle. This pin will go into the hole in the control arm shaft to help locate the control arm. Torque the u-bolt nuts to 45 ft-lbs.

NOTE: We have ran across some trucks where the rear pin is the locator pin. It will locate the control arm correctly too.



2. The Lower Cross Shaft has 2 different locating Hole patterns. These StrongArms use the 8.706" center to center locating holes. The Pin in the Cross Shaft Saddle that was pointed out in **Image 2**, will locate into these Holes. Use the OEM Hardware to attach the Lower making sure the Locating Pin is in the 8.706" center to center Holes.



3. **Image 3** is an example of the lower bolted to the crossmember. Install 3/4" ID Washer on to each end of the cross shaft against the bushing. Then install the 3/4"-16 lock nut. Snug the nut up against the washer. You want the suspension move freely through its travel.

4. The final step is to reinstall the spindle onto the truck. Slide the ball joint pins into the spindle and install the castle nut on each one. Torque the ball joint nuts and install cotter pins in each one.

Ball Joint nut Torque Specs:

Lower: Torque to 90 ftlbs and then tighten nut to align cotter pin hole not to exceeding 130 ftlbs.