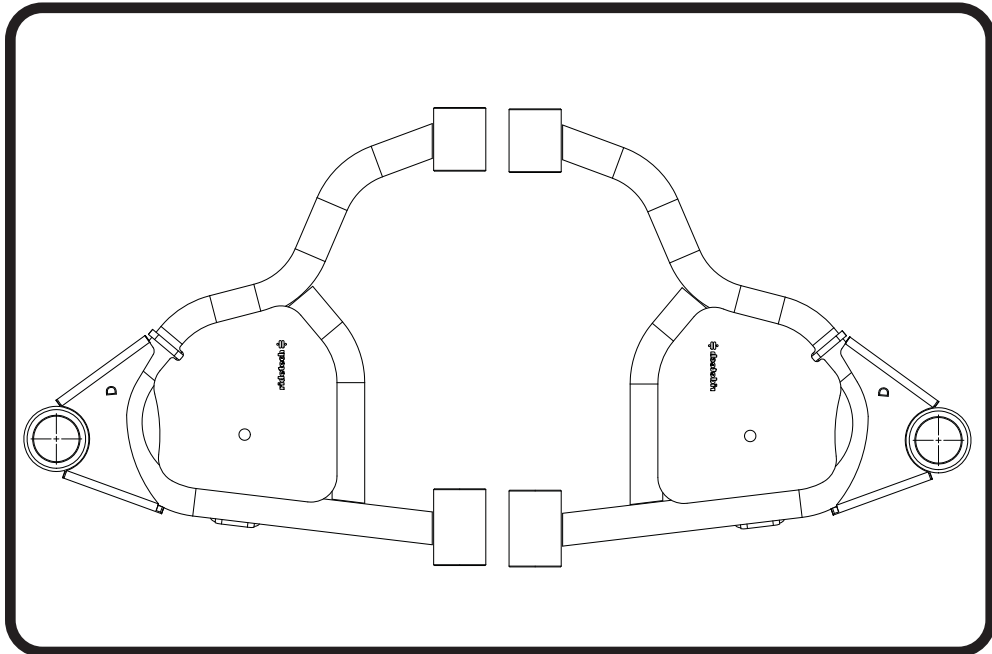


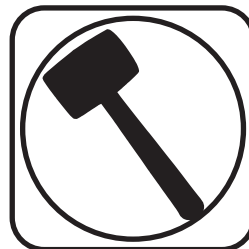
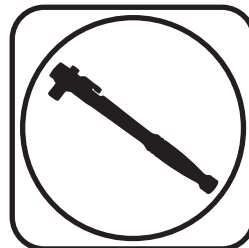


Part # 11381499

1999-2006 Silverado Lower CoolRide StrongArms



Recommended Tools



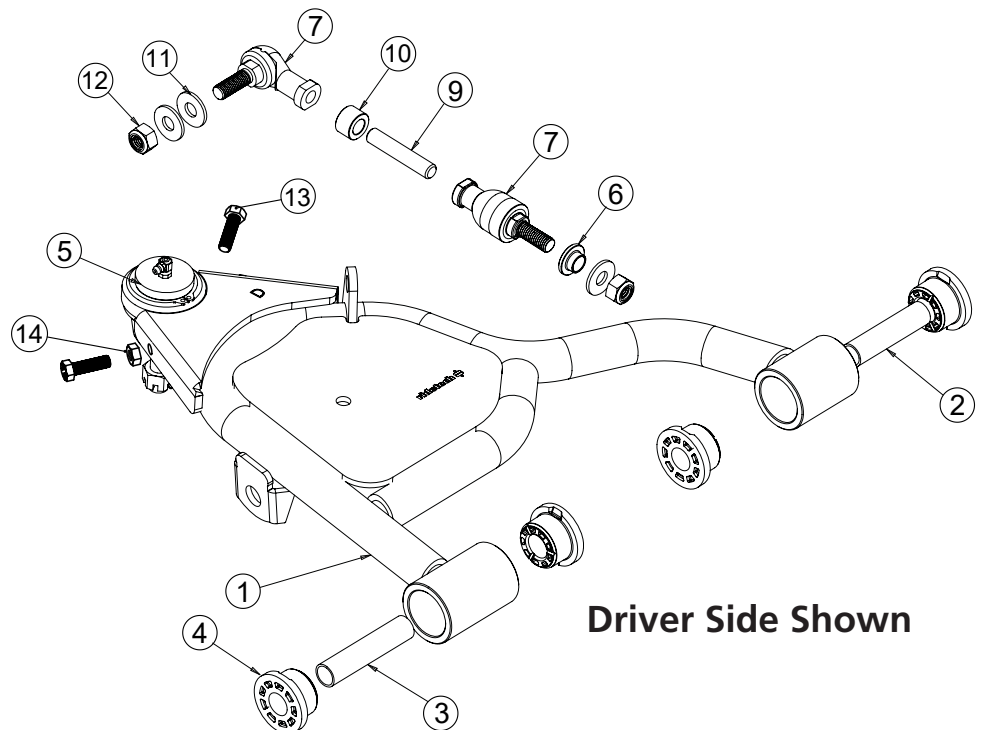
1999-2006 Silverado Lower StrongArms Installation Instructions

Table of contents	
Page 2.....	Included Components
Page 3.....	Getting Started
Page 4.....	PosiLink Installation



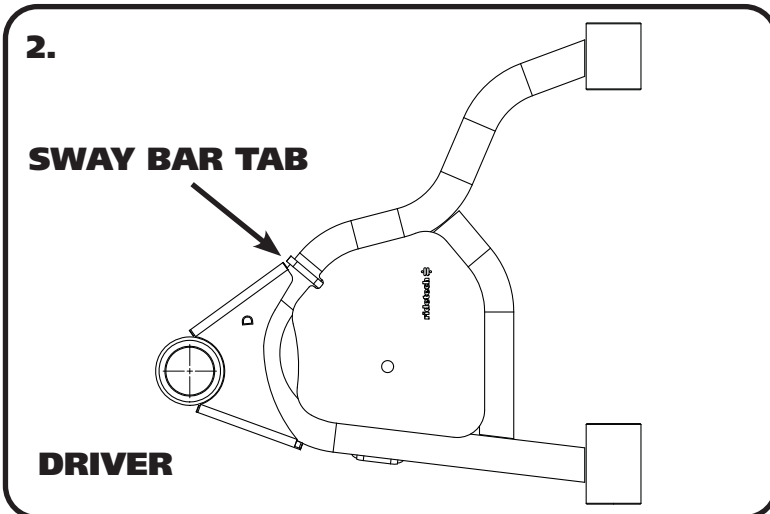
Lower Control Arm ComponentsIn the box

Item #	Part Number	Description	QTY
1	90000100	Driver Lower Control Arm (Shown)	1
1	90000101	Passenger Lower Control Arm	1
2	90000198	3.0" Inner Sleeve	4
3	90000199	3.5" Inner Sleeve	4
4	70010759	Delrin Bushing - with 2" Diameter Ledge	8
5	90000901	Lower Balljoint Assembly - Proforged # 101-10073	2
6	90000095	PosiLink T-Bushing	2
PosiLink Assembly			
7	90000921	12mm 90 Degree PosiLink	2
8	90000922	12mm Straight PosiLink	2
9	90000096	PosiLink Spacer	2
10	99125002	M12 - 1.75 x 65mm Threaded Rod	2
Hardware			
11	99433002	7/16" Flat Washer	6
12	99122001	M12 - 1.75 Nylok Nut	4
13	99371014	3/8"-24 x 1 1/4" Hex Bolt	4
14	99372006	3/8"-24 Jam Nut	4





Getting Started.....



1. Remove the Lower Control Arms, CoilSprings, Shocks, and sway bars linkage. Refer to the factory service manual for disassembly procedure.

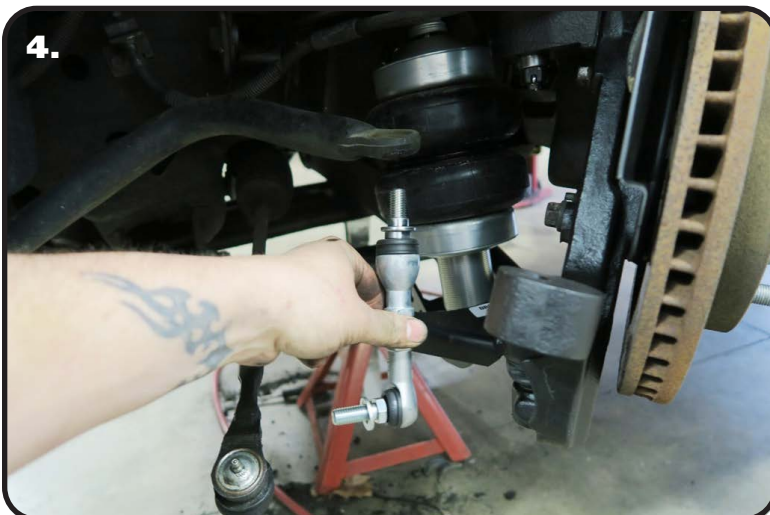
2. After removing the factory lower control arm, clean the bushing mounting surfaces on the frame. The Control Arms are marked "D" for Driver and "P" for Passenger. The Balljoint Pin points down and the Sway bar mount is on the front side of the arm. Fasten the lower arm to the frame with the OEM hardware. Torque to 120 ft-lbs.

Note: On some trucks the frame brackets may be pinched and will need to be spread back apart to allow the bushing to slide in.



3. Insert the ball joint stud into the spindle. Install the castle nut and tighten to 52 ft-lbs. Tighten the nut to align the cotter pin holes. Install the cotter pin.

Install the Coollrde & Shock Kits at this time. Refer to the instructions for assembly.



4. Install the T-Bushing on the Straight PosiLink end with the Large OD against the PosiLink. Insert the assembly into the swaybar with the threads pointing up. Install a 7/16" Flat Washer followed by a M12-1.75 Nylok Nut. Torque to 50 ftlbs.



PosiLink Installation



5. Install a 7/16" Flat Washer onto the threads of the 90 Degree PosiLink. Insert the PosiLink into the swaybar tab on the control arm with the threads pointing to the FRONT of the truck. Install a 7/16" Flat Washer and M12 - 1.75 Nylok Nut and torque to 50 ftlbs.

5. **Image 6** illustrates the correct assembly and orientation of the PosiLink.

