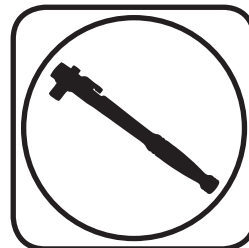




**Part # 11539535 - 1963-1981 C2/C3 Borgeson Steering Box Brace**



**Recommended Tools**



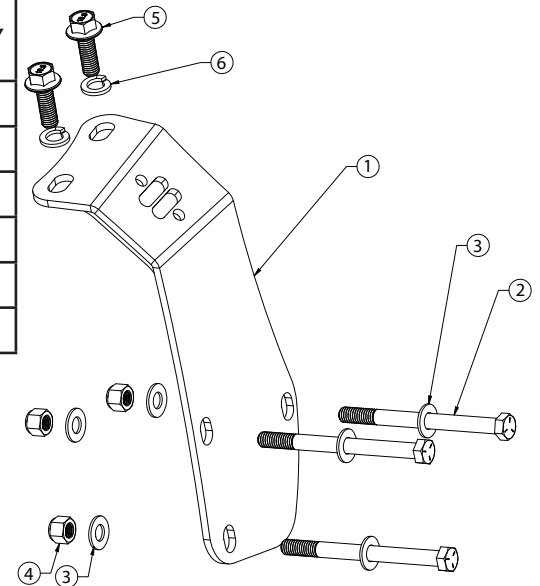
**1963-1981 C2/C3 Steering Box Brace  
Installation Instructions**

**Table of contents**  
Page 2..... Included Components & Brace Installation

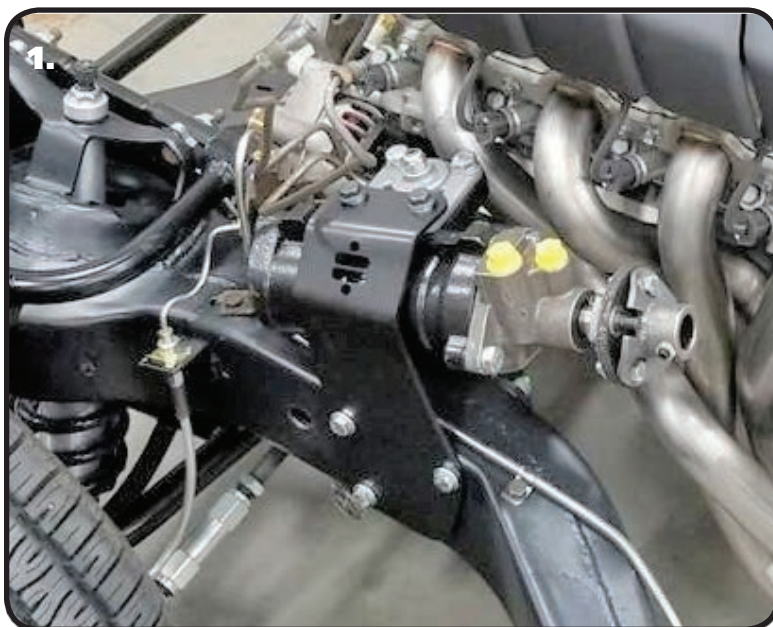


### Borgeson Steering Box Brace Components .....In the box

Item #	Part Number	Description	QTY
1	90002126	Steering Box Brace	1
2	99371044	3/8"-16 x 4 1/2" Hex Bolt	3
3	99373003	3/8" SAE Flat Washer	6
4	99372002	3/8"-16 Nylok Nut	3
5	99111007	M10-1.5 x 30mm Flange Head Bolt	2
6	99113001	M10-1.5 Split Lock Washer	2



## Installation



**1.** This kit includes the Borgeson Steering Box Brace. The brace wraps around the outside of the frame and attaches to the (2) outer bolts of the steering box. Use **Image 1** as a reference. Install the brace by removing the 3 bolts that attach the box to the frame and the 2 outer bolts from the steering box. Install a 3/8" flat washer on each of (3) 3/8"-16 x 4 1/2" hex bolts. Hold the bracket in position and insert the 3 bolt/washers. Hold the steering box in position and insert the 3 bolts through the mounting holes. Install a 3/8" flat washer and 3/8" nylok nut on the threads of each bolt sticking through. Install a M10 split lock washer on each of the (2) m10-1.5 x 30mm flange bolt. Insert them through the top of the bracket, threading them into the (2) holes that you removed the bolts from. Snug all the hardware down. Torque the 3/8" hardware to 30 ftlbs. Torque the M10 hardware to 37 ftlbs.