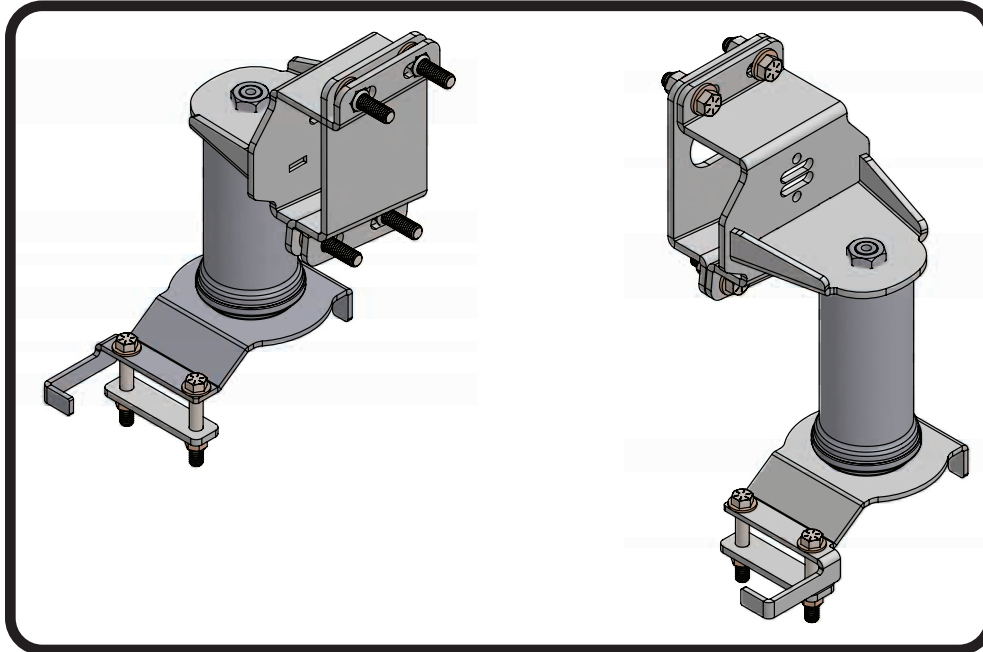


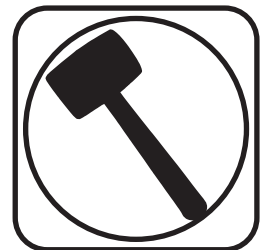
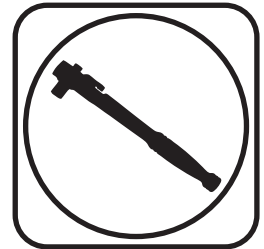


Part # 11704099

2007-2018 GM Silverado/Sierra 1500 Helper Air Springs for Ridetech Lowering Kit



Recommended Tools



2007-2018 GM 1/2 Ton Helper Air Springs Installation Instructions

Table of contents

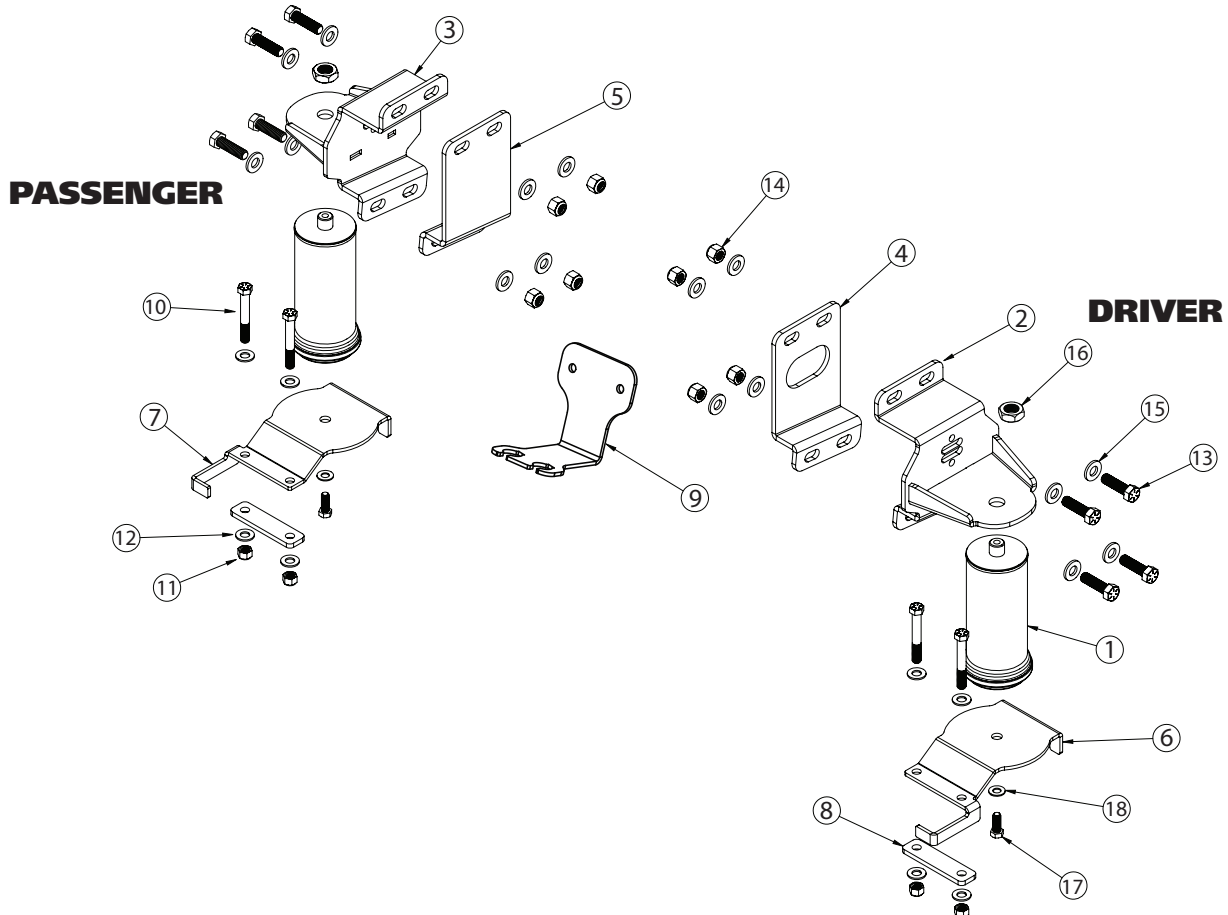
- Page 2..... Kit Components
- Page 3..... Hardware List & Getting Started
- Page 4-6..... Installation

THIS AIR SPRING KIT IS DESIGNED TO BE USED WITH RIDETECH'S FLIP KIT.



Air Spring Kit ComponentsIn the box

Item #	Part Number	Description	QTY
1	90007076	4.5" Diameter Rolling Sleeve Air Spring	2
2	90003467	Outer Frame Bracket - Driver	1
3	90003468	Outer Frame Bracket - Passenger	1
4	90003469	Inner Frame Plate - Driver	1
5	90003470	Inner Frame Plate - Pass	1
6	90003471	Spring Bracket - Driver	1
7	90003472	Spring Bracket - Passenger	1
8	90003253	Lower Bag Mount Clamp Mount	2
9	90001422	Brake Line Mount	1
	31952201	1/8" NPT x 1/4" Tube 90 Degree Fitting	2
	31954400	1/4" Tube T fitting	1
	31957005	1/4" Tube Schrader Valve	1
	31940003	1/4" Air Line by foot	8





Hardware ListIn the box (Kit# 99010242)

The Hardware Kit contains bags to help aid in selecting the correct hardware for the component being installed. The hardware list shows how the hardware is bagged.

Item #	Part #	Description	QTY	Item #	Part #	Description	QTY
LOWER MOUNT TO LEAF SPRING				AIR SPRING			
10	99431025	7/16"-14 x 3" Hex Bolt	4	16	99752004	3/4"-16 Thin Jam Nut	2
11	99433005	7/16" SAE Flat Washer	8	17	99371025	3/8"-16 x 1" Hex Bolt	2
12	99432010	7/16"-14 Nylok Nut	4	18	99373002	3/8" SAE Flat Washer	2
FRAME BRACKET					90002263	Red Loctite	1
13	99501069	1/2"-13 X 1 3/4" Hex Bolt	8	AIR SPRING			
14	99503014	1/2" SAE Flat Washer	16	Not Shown	99101009	#10 x 3/4" Self Drilling Screw	2
15	99502009	1/2"-13 Nylok Nut	8				

Getting Started.....

This kit is designed to be used with the Ridetech 07-18 Silverado rear lowering kit. The rear lowering kit needs to be installed before the air spring kit can be installed.



1. Unbolt the brake line bracket from the top of the driver frame rail. We have the bed off for this photo to better show the bracket and hardware. You do NOT have to remove your bed to install this kit.



2. The brake line bracket that bolted to the top of the driver frame rail will need to be replaced with one supplied in the kit. Start by loosening the lines using line wrenches.

Note: Your truck may only have one line attached to the bracket.



Brake Line Bracket Install



3. Remove the clips that hold the brake lines in place. Retain the clips for installation of the new bracket.



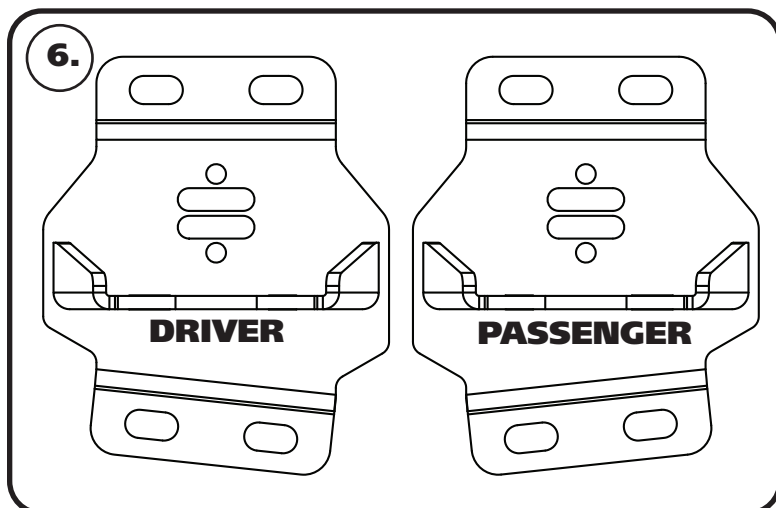
4. Separate the lines and remove them from the bracket. Thread the lines back together and tighten them using line wrenches. The new bracket has slots for the lines to slip through.



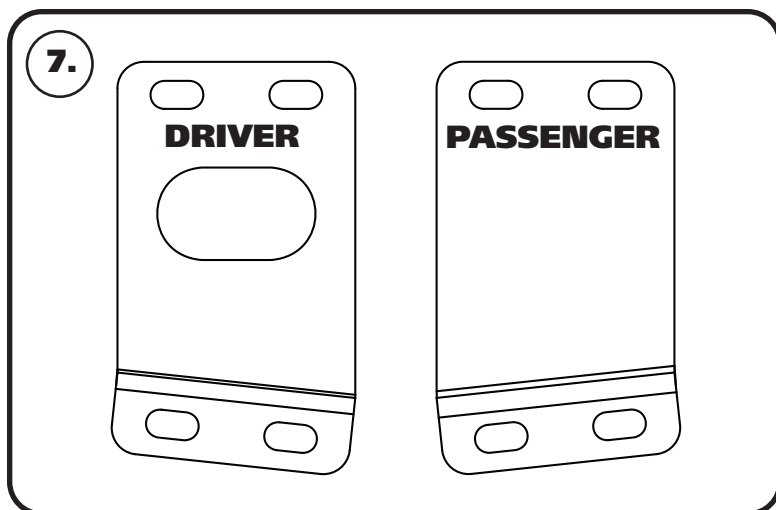
5. Slip the brake line(s) into the new bracket and reinstall the clips. Screw the brake line bracket to the bed brace using the supplied #10 x 3/4" self drilling screws.



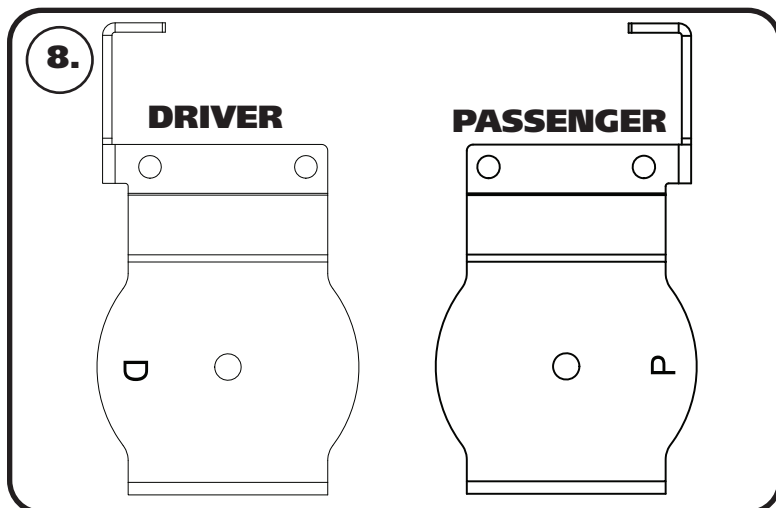
Bracket Identification



6. **Image 6** shows the driver and passenger outer air spring brackets. The **NARROW** side of the bracket goes to the front of the truck.



7. **Image 7** shows the driver and passenger inner air spring mount clamp brackets. Again, the **NARROW** side of the bracket will be to the front of the truck. The Driver side bracket has a large hole in it.



8. **Image 8** shows the driver and passenger lower brackets.



Installation



9. The air springs and brackets need to be assembled. The upper and lower air spring brackets are side specific. Use the images on the previous page to help with bracket assembly.

a. Thread the 3/4"-16 jam nut on the upper stud of the air spring. Torque the nut to 350-400 in-lbs. **DO NOT USE AN IMPACT TO TIGHTEN.** The gussets of the air spring mount will point up to the bed.



10. Put thread sealant on the 90 degree air fittings and thread them into the top of each air spring and tighten. Proper tighten of a pipe thread is, finger tight plus 1 1/2 turns with a wrench.



11. Attach the lower air spring mount to the bottom of the air spring using red loctite, a 3/8"-16 x 1" bolt & 3/8" SAE flat washer. **DO NOT TIGHTEN AT THIS TIME.**



Installation



12. Put the air spring assembly in place on the leaf spring BEHIND the differential. The narrow part of the upper air spring mount will go to the front of the truck.



13. Use Images 13-15 as a reference for attaching the lower air spring bracket. The bolt holes need to be toward the axle with the forward "hook" hooking the u-bolt. The "hook" will help with positioning of the lower mount. The rear of the mount has 2 tabs that will sit on each side of the leaf spring. The emergency brake cable will run UNDER the bracket.



14. Install a 7/16" flat washer on each of (2) 7/16" - 14 x 3" bolts. Insert the bolts/washers in the forward 2 holes of the lower bracket.



Installation

15.



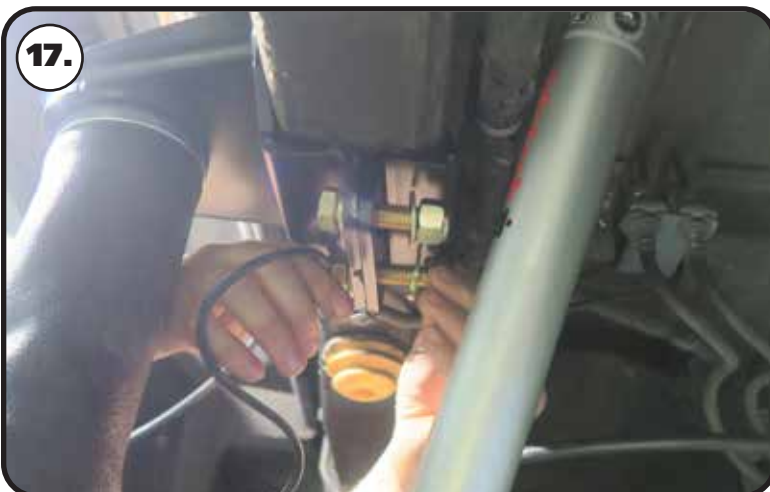
15. Slip the spring clamping plate on the threads of the 2 bolts sticking down past the leaf spring. Install a 7/16" flat washer & 7/16"-14 nylok nut on each bolt. Tighten the hardware to 50 ft-lbs.

16.



16. The inner frame plate is side specific. THE DRIVER SIDE HAS A LARGE HOLE IN THE BRACKET. The passenger side does NOT have a hole.

17.



17. Hold the inner plate in position. It is bent to wrap under the frame rail. The (4) bolt holes will line up with the bolt holes of the upper air spring mount.



Installation



18. Install a 1/2" flat washer on each of (4) 1/2"-13 x 1 3/4" hex bolts. Insert them through the aligned holes of the air spring mount and inner plate. Install a 1/2" flat washer and 1/3"-13 nylok nut on the threads of the bolts. Push the upper mount to the rear of the truck, making sure it is tight on the frame. Torque to 75 ft-lbs.



19. Tighten the lower 3/8" air spring bolt using a 9/16" wrench.

20. Establish a location for the inflation fitting and run the air lines. The air springs will get hooked together with the supplied "T" fitting. Cut the air line with a razor blade, making sure the cut is straight. Keep the airline at least 6" from any heat source.

ALWAYS KEEP A MINIMUM OF 5 PSI IN THE AIR SPRINGS TO PREVENT DAMAGE TO THE AIR SPRINGS.