



**Part # 11729122 - 2019 - Up Silverado 1500 Rear Sway Bar**

### Recommended Tools

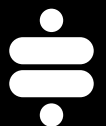


## 2019-Up Silverado Rear Sway Bar Installation Instructions

### Table of contents

- Page 2..... Included Components
- Page 3..... Exploded View
- Page 4-9..... Sway Bar Installation
- Page 10..... Sway Bar Adjustment & Heat Shield Trimming

THIS SWAY BAR IS DESIGNED TO BE USED WITH THE REAR LOWERING KIT #11729511.





### Major Components .....In the box

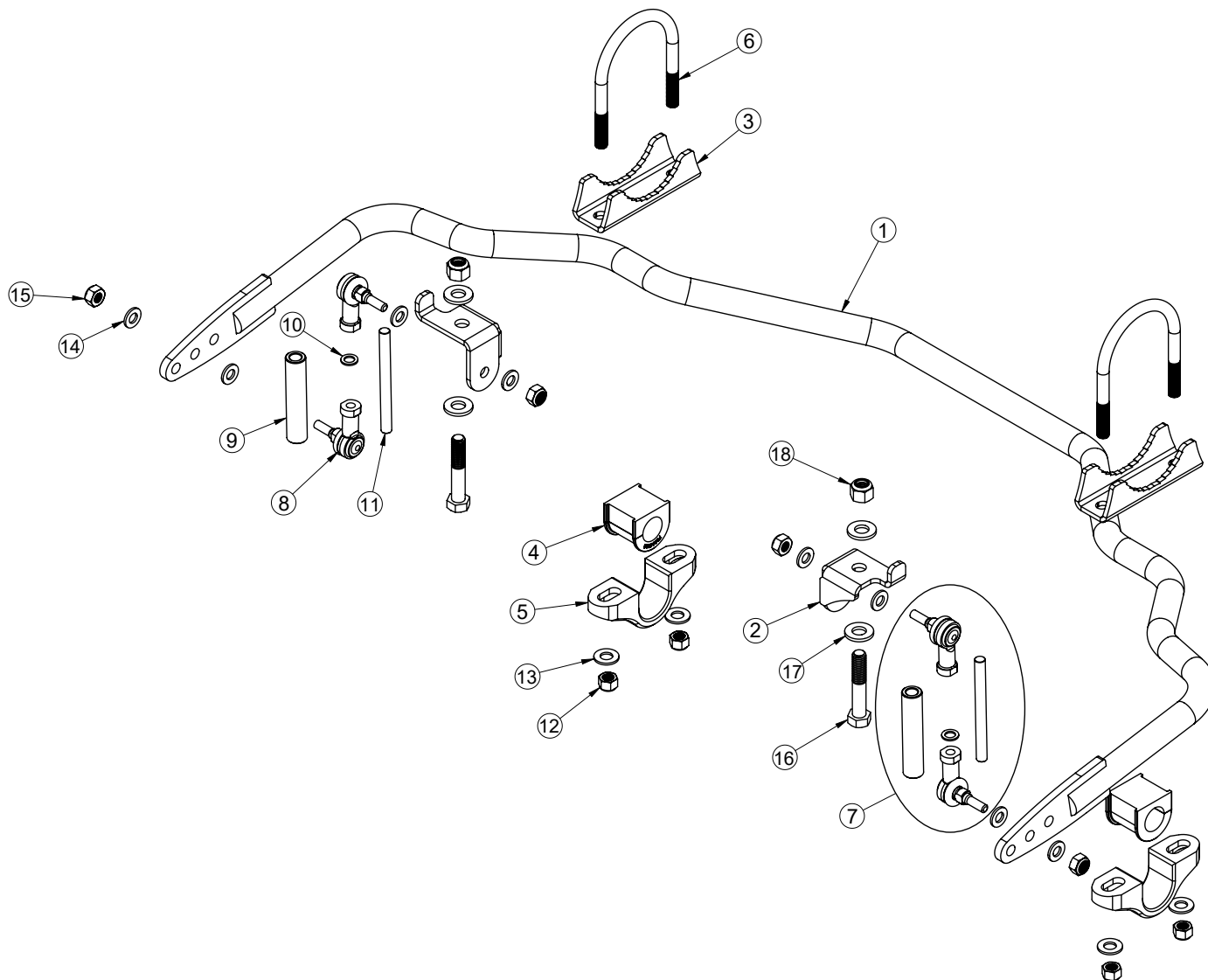
Item #	Part #	Description	QTY
1	90003505	Rear Sway Bar	1
2	90003517	Rear Sway Bar Frame Mount	2
3	90003283	Sway Bar Axle Bracket	2
4	70015012	Sway Bar Bushing	2
5	90001345	Sway Bar Bushing Strap	2
6	90000088	7/16"-20 U-Bolt, 3.25" Wide x 4.50" Long	2
<b>7</b>	<b>PosiLink Assembly</b>		
8	90003842	10mm 90 Degree End link	4
9	90003506	PosiLink Spacer	2
10	90002275	Copper Crush Washer	4
11	99115012	M10-1.5 x 130mm Threaded Stud	2

### Hardware Kit .....# 99010220

Item #	Part #	Description	QTY	Item #	Part #	Description	QTY
<b>U-BOLT</b>				<b>END LINK BRACKET TO FRAME</b>			
12	99432007	7/16"-20 Nylok Nut	4	16	99501004	1/2"-13 X 2 3/4" Hex Bolt	2
13	99433005	7/16" SAE Flat Washer	4	17	99503014	1/2" SAE Flat Washer	4
<b>END LINKS</b>				18	99502009	1/2"-13 Nylok Nut	2
14	99113002	M10 Flat Washer	8				
15	99112002	M10-1.5 Nylok Nut	4				



### Exploded View



**Note:** This sway bar kit utilizes an anti-friction lining in the sway bar bushing. The lining allows the sway bar to move freely and quietly in the bushing. No lubrication is required.

**THIS SWAY BAR ATTACHES TO THE AXLE AND FRAME.**



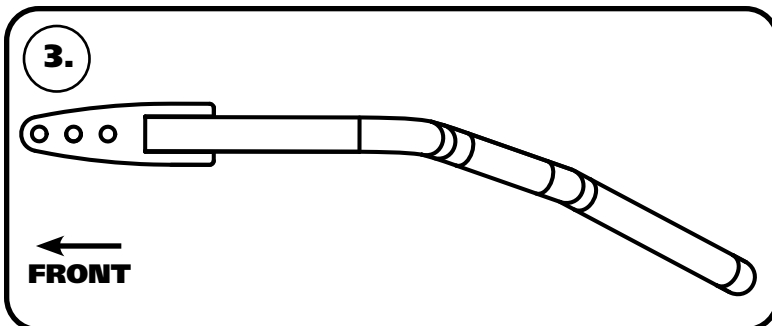
### Getting Started.....

#### NOTE: DUAL-EXHAUST TRUCKS ONLY

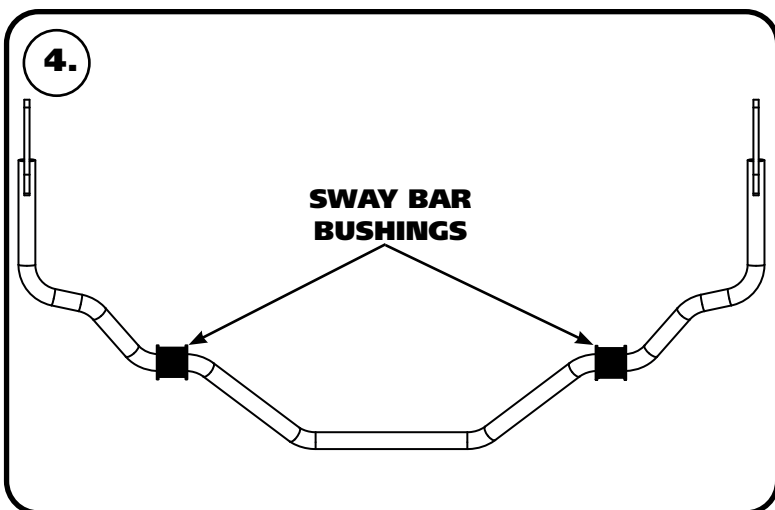
If you have a truck with dual-exhaust, the heat shield surrounding the spare tire will need to be trimmed to provide clearance for the sway bar.

See the illustration on page 10 for trimming guidelines.

1. Raise the vehicle to a safe and comfortable working height. Ensure the vehicle is supported and stable before working under the truck.
2. The rear flip kit should be installed before the rear sway bar.



3. **Diagram 3** shows how the sway bar will be positioned on the rear differential.



4. Open the sway bar bushing at the split and slip it **OVER** the sway bar at the locations shown in **Image 4**. Do this for both bushings.



### Sway Bar Installation



5. Install the bushing straps over the sway bar bushings.



6. **Image 6** shows the passenger side frame bracket installed. The frame/crossmember will need to be drilled with a 1/2" drill bit. The frame bracket is centered below the crossmember with the locating tab against the outside of the frame rail.



7. **Image 7** shows the drilled hole to help give you an idea of the position. Hold the bracket on the bottom of the frame rail and mark the hole to be drilled. Again, the bracket needs to be centered below the crossmember with the locating tab against the outside of the frame rail.



### Sway Bar Installation



**8.** Drill the bottom of the frame with a 1/2" drill bit.



**9.** The 1/2" hole needs to be drilled through the bottom of the crossmember too.



**10.** Install a 1/2" flat washer on a 1/2" - 13 x 2 3/4" bolt. Hold the frame bracket in place with the tab on the outside of the frame. Insert the bolt/washer in the aligned holes.



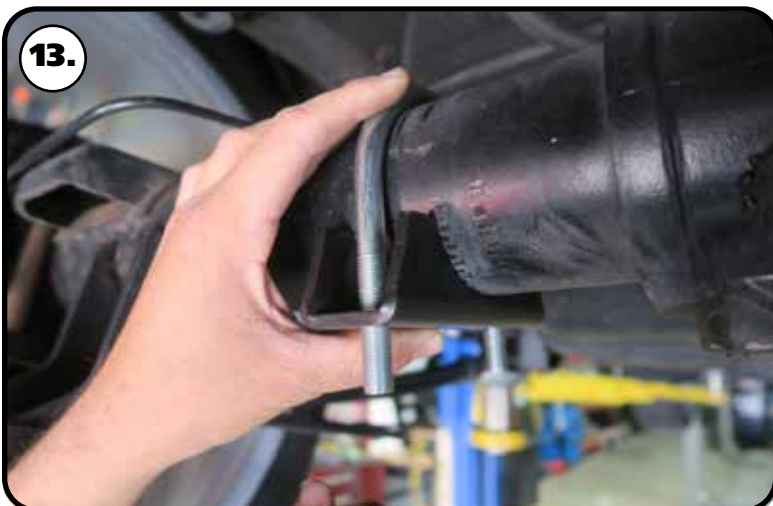
### Sway Bar Installation



**11.** Install a 1/2" flat washer & 1/2"-13 nylok nut on the threads of the bolt sticking into the crossmember. Torque to 55 ft-lbs. Repeat the previous steps for the frame bracket on the other side.



**12.** Install a 7/16" u-bolt on each axle tube



**13.** Slip the axle mount onto the u-bolts. The "teeth" of the axle bracket will sit against the axle tube.



### Sway Bar Installation



**14.** Hold the sway bar in position on the truck with the center bend toward the ground. Slide the sway bar bushing strap onto the u-bolt.



**15.** Install a 7/16" flat washer & 7/16"-20 nylok nut on the threads of the u-bolts. Center the sway bar on the axle. Snug the hardware down and verify the axle mounts are parallel with the leaf springs. Torque the u-bolt hardware to 35 ft-lbs.



**16.** Install a M10 flat washer on the threads of the PosiLink. Insert the PosiLink in the mounting hole of the frame bracket with the threads of the end link pointing to the center of the truck.



### Sway Bar Installation



**17.** Install a M10 flat washer & M10-1.5 nylok nut on the threads of the PosiLink. Torque the nut to 37 ft-lbs. Repeat on the other side.



**18.** Install a M10 flat washer on the threads of the PosiLink. Insert the PosiLink in the **MIDDLE** mounting hole of the sway bar arm. The threads of the PosiLink should be pointing to the outside of the truck.

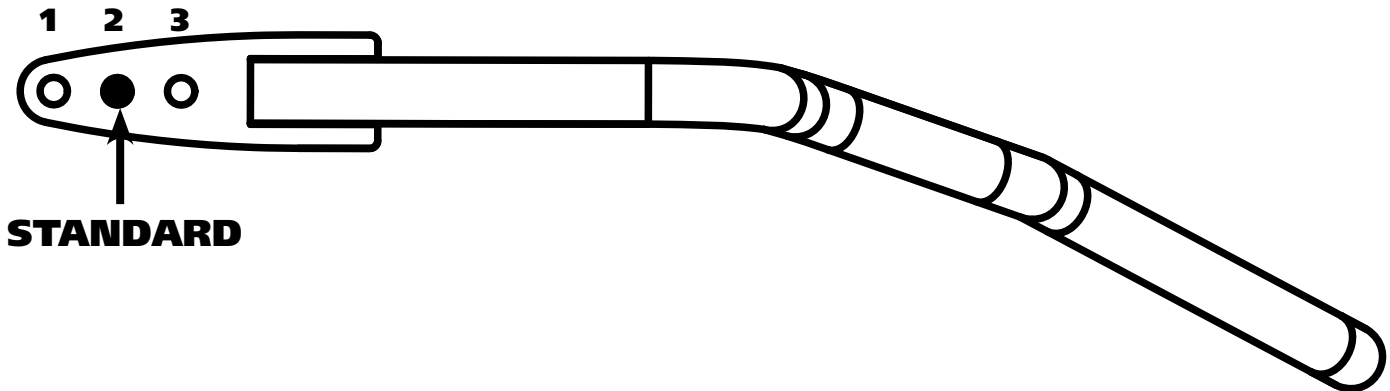


**19.** Install a M10 flat washer & M10-1.5 nylok nut on the threads of the PosiLink. Torque the nut to 37 ft-lbs. Repeat on the other side.

**20. DOUBLE CHECK THE HARDWARE TO MAKE SURE IT IS TIGHT.**



### Sway Bar Adjustment



This sway bar has 3 positions to aid in the tuning of your truck's handling. We start in the #2 MIDDLE position and tune from there. The # 3 position to the rear of the truck will make the sway bar stiffer. The #1 position to the front of the truck will make the sway bar softer. The position of the sway bar linkage will be determined by several factors; spring rate, front bar size, and even tire size. Keep in mind, the handling of the truck will be affected when you change the linkage location. Drive the truck to get accustomed to the new handling characteristics.

Rear Sway Bar Rates:

Hole 1: 150 lbs/in

Hole 2: 185 lbs/in

Hole 3: 200 lbs/in

### Heat Shield Trimming - Dual-Exhaust Trucks Only

