



**INSTALLATION  
INSTRUCTIONS**



**Part # 12099100**



**Front Sway Bar**

**1964-1966 Mustang w/TruTurn**

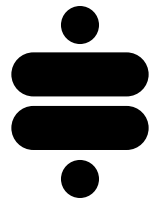


[www.ridetech.com](http://www.ridetech.com)  
812.482.2932





**Please Read And Understand All Instructions  
And Warnings Prior To The Installation Of  
This Product.**



**THANK YOU**

Congratulations on your new Ridetech product! It's an honor that you've selected the Ridetech brand to upgrade your ride. Our products are developed around quality and performance without compromise. We're confident you'll have many years (and miles) of pure driving enjoyment.  
Thank you for choosing Ridetech!

### **Road Map**

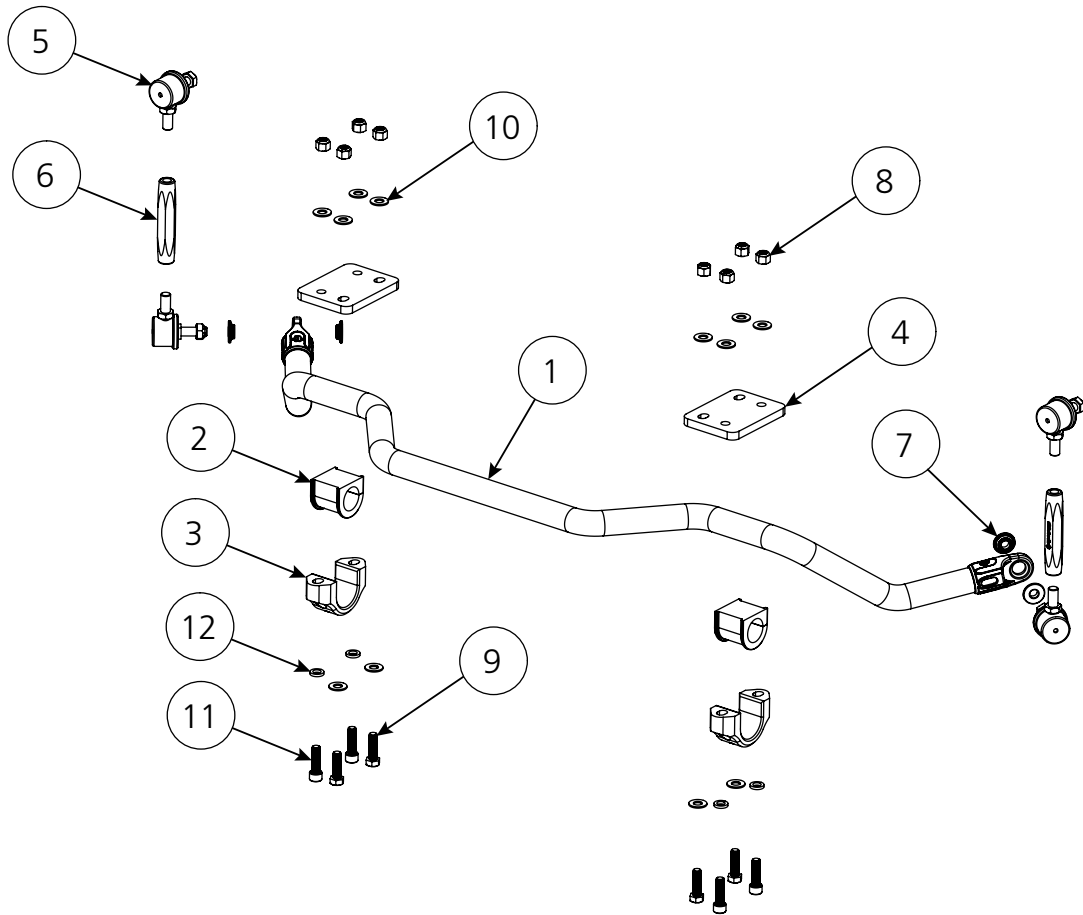
<b>Exploded View/Parts Listing</b>	<b>3</b>
<b>Sway Bar Mounting</b>	<b>4-5</b>
<b>End Link Installation</b>	<b>6</b>
<b>Final Assembly</b>	<b>7</b>

#### **NOTE:**

**This sway bar is designed to only be compatible with Ridetech StrongArms. It is not compatible with OEM control arms.**

**The bushings in this kit contain an anti-friction lining.  
No lubrication is required.**

# EXPLODED VIEWS AND PARTS LISTING



COMPONENTS			
Item #	Part #	Description	Qty
1	90003248	Front Sway Bar	1
2	70015013	Lined Sway Bar Bushing	2
3	90001344	Billet Mount	2
4	90003213	Adapter Plate	2
5	90002571	End Link	4
6	90001253	End Link Spacer	2
7	90001258	Adapter Bushing	4
<b>HARDWARE KIT: 99010162</b>			
8	99372001	3/8-16 GR8 NYLOK NUT	8
-	99623001	5/8 SAE GR8 FLAT WASHER (NOT USED)	2
9	99371005	3/8-16 X 1.25" HEX BOLT GR8	4
10	99373002	3/8 SAE GR8 FLAT WASHER	12
11	99371018	3/8-16 X 1.25" SHCS	4
12	99373020	3/8" x 5/8" OD FLAT WASHER	4

# Sway Bar Mounting

1. Raise the vehicle to a safe and comfortable working height and remove the existing sway bar.

2. Open each sway bar bushing at the split and slide over the bar (Figure 1).

Position a bushing at each end of the bar at the approximate locations shown in Figure 2.

3. Slide a billet bushing strap over each bushing (Figure 3).

4. This kit includes an adapter plate for attaching the sway bar to the frame. The adapter plate mounts to the frame using the slotted holes in the plate, and the original holes in the frame. The two round holes in the adapter plate should be offset towards the engine. See Figure 4.



Figure 1

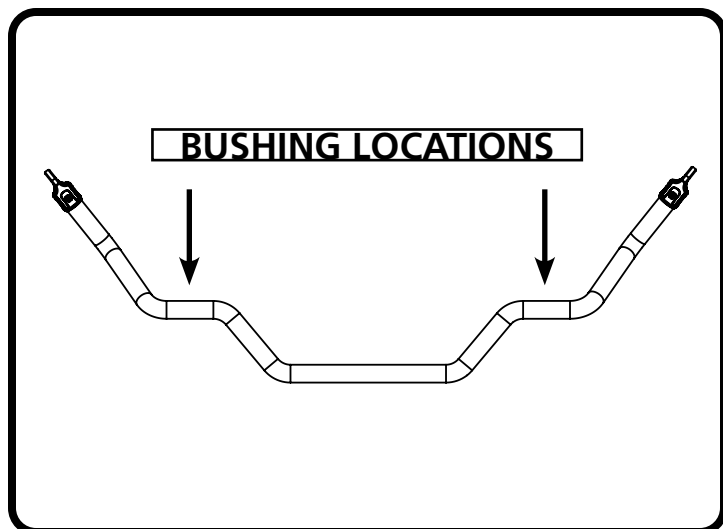


Figure 2

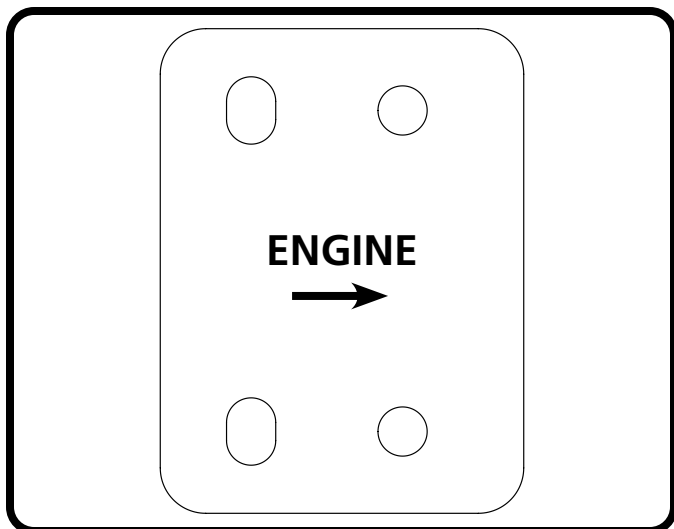


Figure 4



Figure 3

## Sway Bar Mounting

**5.** Align the slotted holes in the adapter plate with the original mounting holes in the frame. Install a 3/8" flat washer on (2) 3/8"-16 x 1 1/4" hex bolts. Insert a bolt/washer through each slotted hole and OEM mounting hole (Figure 5). Install a 3/8" flat washer on the threads followed by a 3/8"-16 nylok nut.

Repeat on the opposite side.

Torque the hardware to **30 ft-lbs.**

**6.** Position the sway bar in the car and align the billet mounts with the holes in the adapter plates. The sway bar arms will be bending upward with the center of the bar toward the ground. Install a 3/8" x 5/8" OD flat washer on (4) 3/8"-16 x 1 1/4" socket head bolts and insert into each of the 4 billet mount holes (Figure 6). Install a 3/8" flat washer on the threads followed by a 3/8"-16 nylok nut.

**DO NOT** tighten the hardware yet. It will be left partially loose until the end links are installed.

**7.** The driver and passenger sway bar end links are clocked opposite of each other. With the top stud pointing toward you, the lower stud should be pointing to the right for the driver side, and to the left for the passenger side. See Figure 7. Set the links to 6" center to center. Snug the jam nuts against the center adapter.



Figure 5



Figure 6

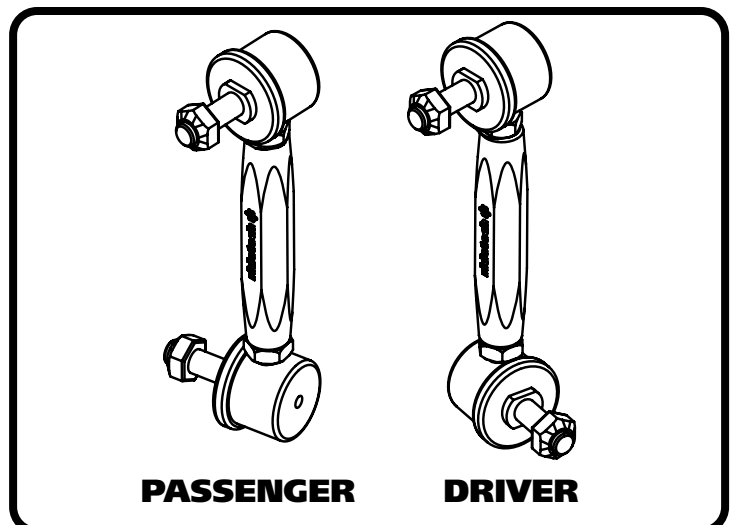


Figure 7

## End Link Installation

**8.** Insert the upper stud of the end link in the tab of the upper control arm with the stud pointing to the rear of the car. The lower stud should be pointing toward the engine (Figure 8).

Install the included 10mm nut on the stud of the end link and torque to **37 ft-lbs.**

**9.** Install a T-bushing on the lower 90 degree end link. The T-bushings are installed with the large diameter against the shoulder of the end link (Figure 9).

**10.** Insert the lower 90 degree end link w/T-bushing into the sway bar end. The end link stud should be pointing toward the engine (Figure 10).



Figure 8

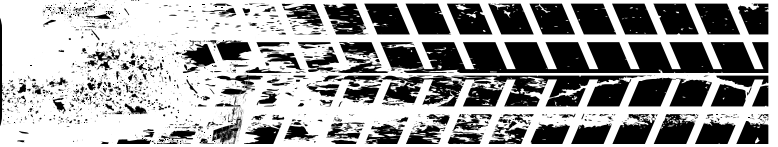


Figure 9



Figure 10

## Final Assembly



**11.** Install a 2nd T-bushing on the end link stud with the small diameter facing into the sway bar (Figure 11). Install the included 10mm nut and torque to **37 ft-lbs**.

Repeat steps 8-11 on the opposite side.

**12.** You may now tighten the bolts for the billet mounting straps. Torque to **30 ft-lbs**.

**13.** Check the sway bar and end link clearance through the full range of suspension travel to ensure that the end links do not bind.



Figure 11



Figure 12