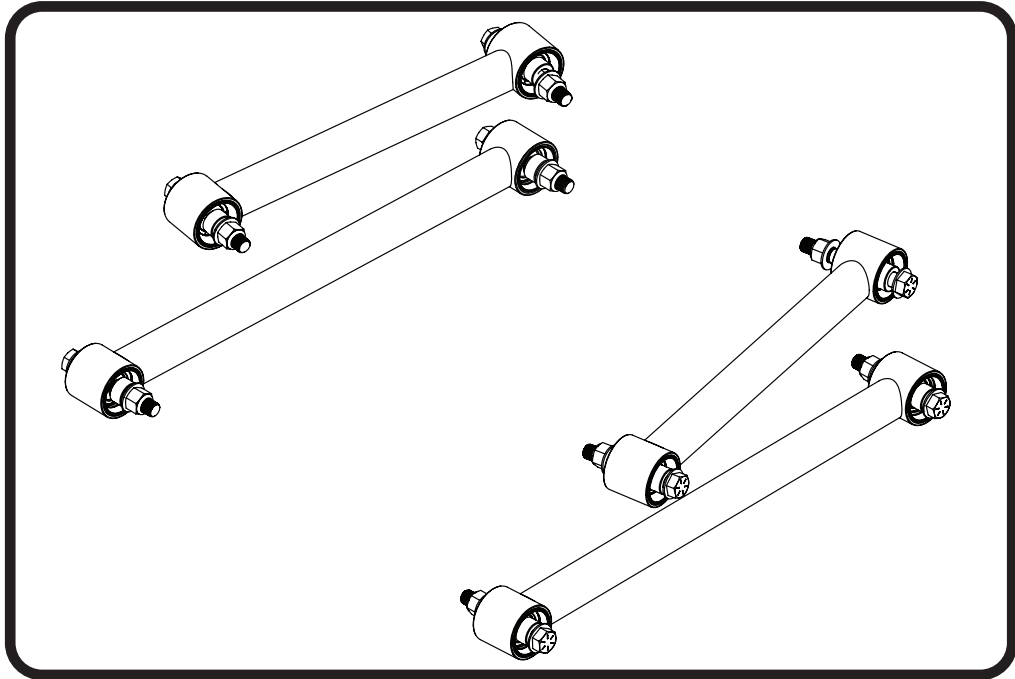




Part # 13137299 - 2019-2023 Ram 1500 Rear 4-Link Bars



Recommended Tools



2019-2023 Ram 1500 Rear 4-Link Bars Installation Instructions

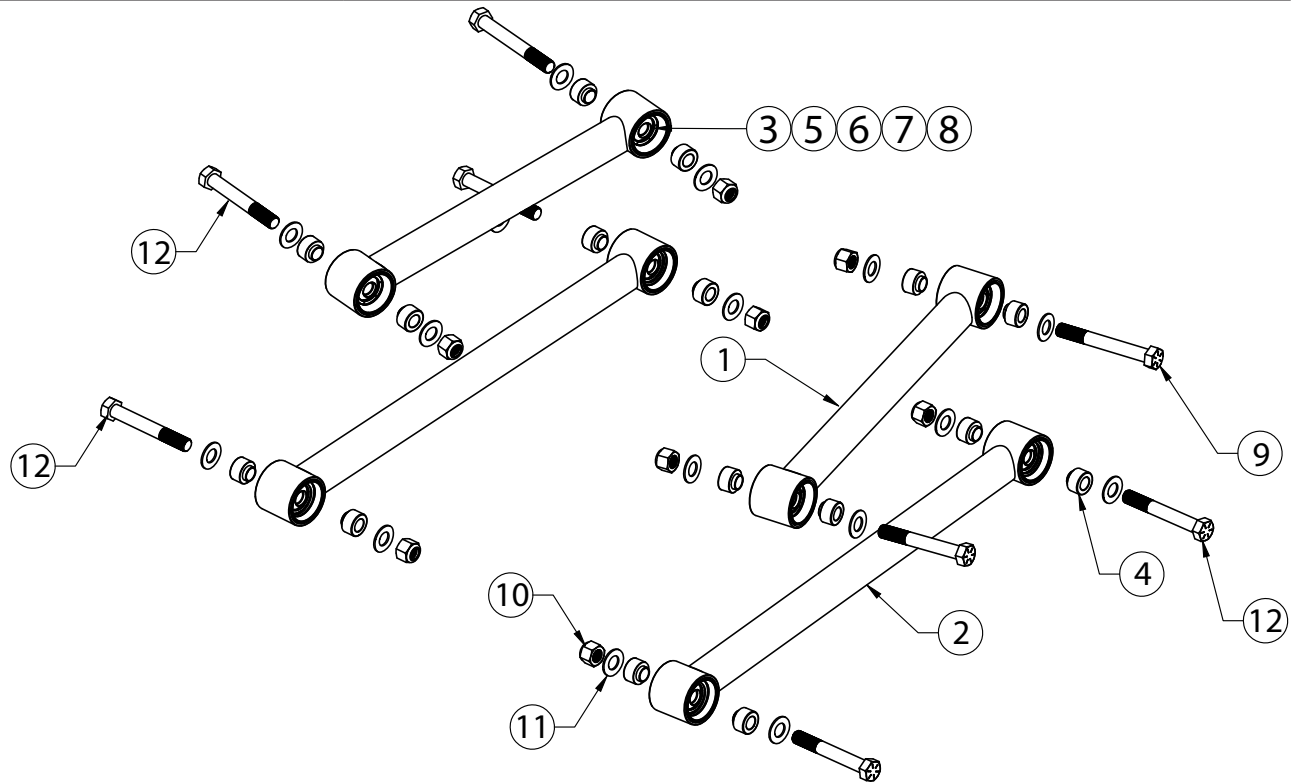
Table of contents	
Page 2.....	Included Components
Page 3.....	Disassembly
Page 3.....	4-Link Bar Installation

IF INSTALLING THE LOWERING KIT, INSTALL THE 4-LINK BARS IN CONJUNCTION WITH THE LOWERING KIT.



Major ComponentsIn the box

Item #	Part #	Description	QTY
1	90003600	Upper 4 Link Bar - 16 3/8" center to center	2
2	90003601	Lower 4 Link Bar - 23 3/4" center to center	2
3	90003610	R-Joint Housing - pressed into bars	8
4	70016749	R-Joint Spacer	16
5	70013628	R-Joint Ball Cage - installed in bars	8
6	70013629	R-Joint Pivot Ball - installed in bars	8
7	70013630	R-Joint Wave Spring - installed in bars	8
8	70013631	R-Joint Snap Ring - installed in bars	8



Hardware Kit# 99010254

Item #	Part #	Description	QTY
UPPER BAR REAR BOLTS			
9	99621007	5/8"-18 X 5" Hex Bolt	2
10	99622001	5/8"-18 Nylok Nut	2
11	99623001	5/8" SAE Flat Washer	4
UPPER BAR FRONT BOLTS			
10	99622001	5/8"-18 Nylok Nut	2
11	99623001	5/8" SAE Flat Washer	4
12	99621015	5/8"-18 X 4 1/2" Hex Bolt	2

Item #	Part #	Description	QTY
LOWER BAR MOUNT TO AXLE			
10	99622001	5/8"-18 Nylok Nut	4
11	99623001	5/8" SAE Flat Washer	8
12	99621015	5/8"-18 X 4 1/2" Hex Bolt	4



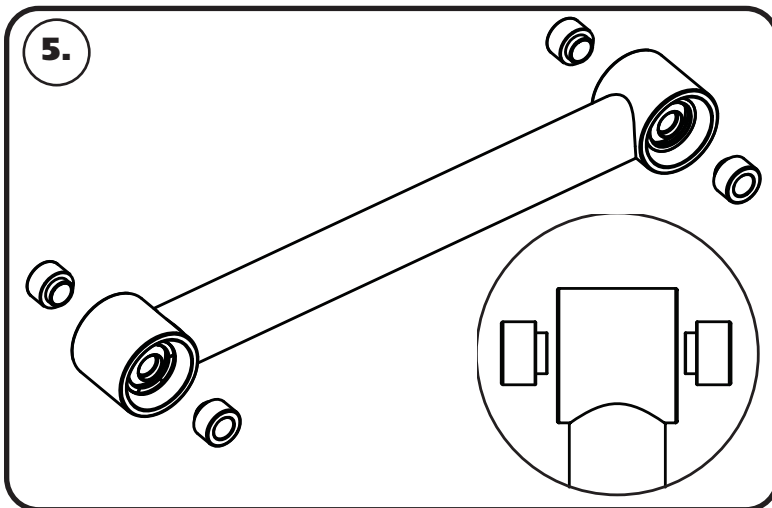
Disassembly

IF YOU ARE INSTALLING ALONG WITH THE RIDETECH LOWERING KIT, THE REAR SUSPENSION SHOULD ALREADY BE DISASSEMBLED.

1. Raise the vehicle to a safe and comfortable working height and support it by the frame. You will need to be able to move the rear differential up and down. Use a jack under the rear axle to raise and lower it during the install.
2. Jack up the rear end slightly to remove the tension from the rear shocks. Disconnect the bottom of the shock absorbers.
3. Disconnect the rear sway bar linkage. This will allow the axle to be lowered further.
4. Lower the jack to relieve the tension on the rear springs, but keep the jack touching the rear axle. You will need to keep the rear end supported during the install.

DO NOT strain the brake lines.

4-Link Bar Installation



WE RECOMMEND INSTALLING ONE SIDE AT A TIME. REMOVE THE OEM 4 LINK BARS FROM ONE SIDE OF THE TRUCK.

5. The R-Joint in the upper and lower control arms require a spacer to be installed in each side of the pivot balls. Insert the small end of the spacer into the ball until it bottoms out in the pivot ball. All of the spacers for the control arms are the same.

6. With the r-joint spacers inserted into the pivot balls, install the 4-Link bars in the chassis.

Attach the bars to the truck using a 5/8" flat washer installed on a 5/8" bolt. All the positions use a 5/8"-18 x 4 1/2" bolt except for the upper rear. It uses a 5/8" 18 x 5" bolt. With the bolts installed, install a 5/8" flat washer and 5/8-18 nylok nut.

If installing with the Ridetech lowering kit. The rear of the 4 link bars will need to be installed in conjunction with the relocation brackets.

Torque the 4-link bar hardware to 195 ft-lbs.

