



350 S. St. Charles St. Jasper, In. 47546
Ph. 812.482.2932 Fax 812.634.6632

www.ridetech.com

Part # 19999002
Universal Panhard Bar Kit
Stainless Steel

Components:

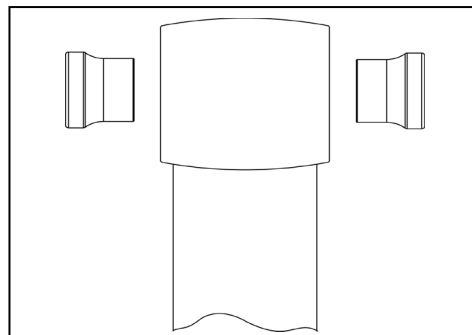
1	90002823	BARTW34.25 Panhard bar (with R-joints)
1	90000390	A415 Panhard bar axle bracket
1	90000332	A316 Panhard bar frame bracket
1	90002282	Polished R-Joint Rod End housing
4	70013334	R-Joint Spacer – 5/8" ID

R-Joint Components

70013279	Retaining Ring
70013280	Wavo Wave Spring
70013276	R-Joint Composite Center Ball Cage
70013275	R-Joint Stainless Center Ball

Hardware:

2	99621003	5/8 x 2 3/4 SAE bolt (gr. 8)	Panhard bar
2	99622006	5/8 SAE thin nyloc nut	Panhard bar
1	99752004	3/4 SAE jam nut	Panhard bar
2	99431002	7/16 x 1-1/4 USS bolt	Panhard bar frame bracket to frame
4	99433002	7/16 SAE flat washer	Panhard bar frame bracket to frame
2	99432001	7/16 USS nyloc	Panhard bar frame bracket to frame



Insert the SMALL end of the spacer INTO each side of the center pivot ball. Push the spacer in until it bottoms out in the center pivot.