



350 S. St. Charles St. Jasper, In. 47546  
Ph. 812.482.2932 Fax 812.634.6632

[www.ridetech.com](http://www.ridetech.com)

### Part # 19999003 Universal Panhard Bar Kit

#### Components:

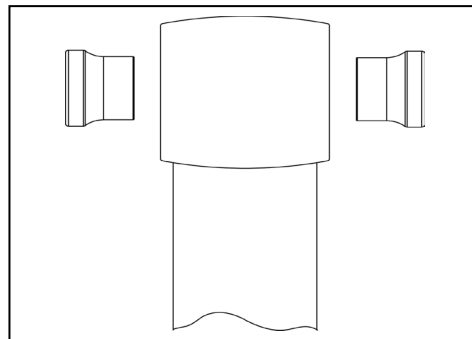
1	90002854	BARTW34.125 Panhard bar (with R-joints)
1	90000390	A415 Panhard bar axle bracket
1	90000332	A316 Panhard bar frame bracket
1	70013364	R-Joint Rod End housing
4	70013334	R-Joint Spacer – 5/8" ID

#### R-Joint Components

70013279	Retaining Ring
70013280	Wavo Wave Spring
70013276	R-Joint Composite Center Ball Cage
70013275	R-Joint Stainless Center Ball

#### Hardware:

2	99621003	5/8 x 2 3/4 SAE bolt (gr. 8)	Panhard bar
2	99622006	5/8 SAE thin nyloc nut	Panhard bar
1	99752004	3/4 SAE jam nut	Panhard bar
2	99431002	7/16 x 1-1/4 USS bolt	Panhard bar frame bracket to frame
4	99433002	7/16 SAE flat washer	Panhard bar frame bracket to frame
2	99432001	7/16 USS nyloc	Panhard bar frame bracket to frame



Insert the SMALL end of the spacer INTO each side of the center pivot ball. Push the spacer in until it bottoms out in the center pivot.