

## Updating Firmware:

1-Open "e4MonitorvX.XX.exe" (your version number may vary, and is indicated by the "X.XX" in the file name.



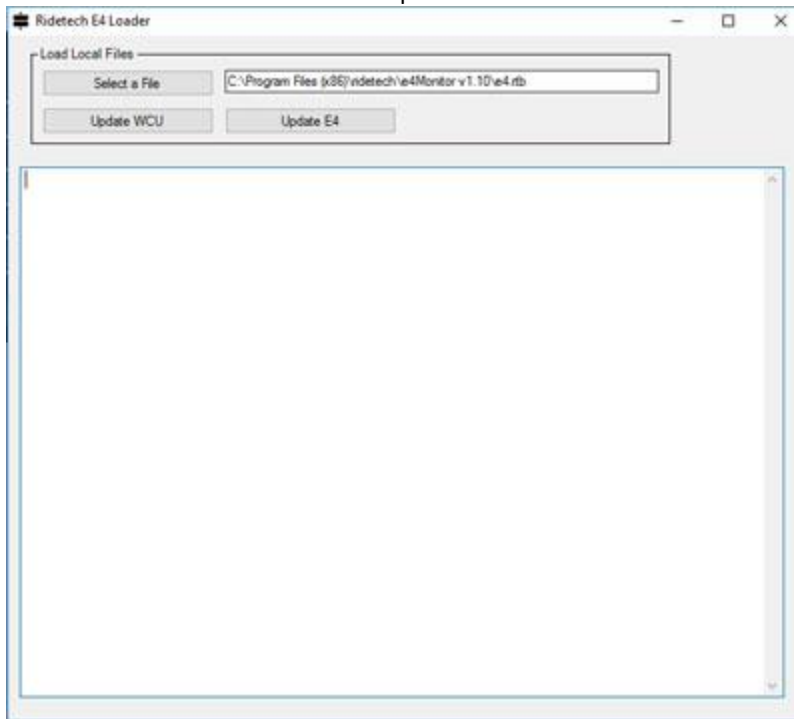
If you open Ridetech Monitor vX.XX, and your ECU or WCU is of a previous version, this screen will appear with a text box stating "E4 Found Incorrect Firmware Version!"

Click the "OK" button:



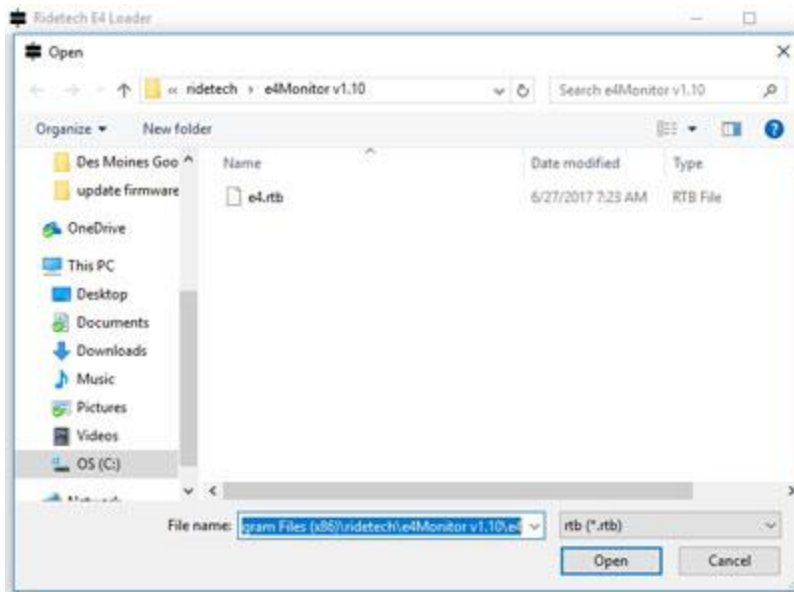
2-Under the "Help" tab at the top, select "Update Firmware".

-The "Ridetech e4 Loader" window opens:



3-Use the "Select a File" button and browse to the required firmware.

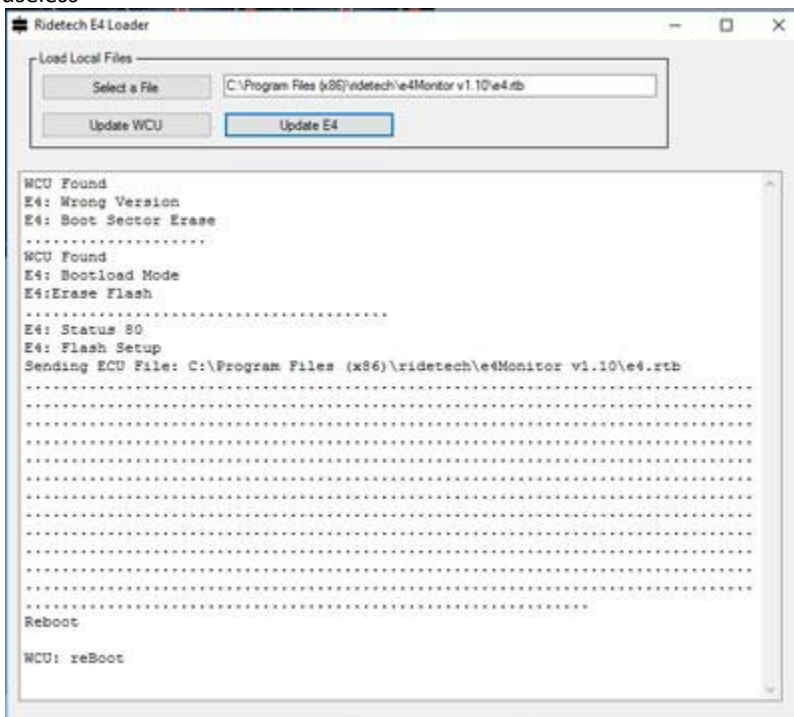
-Click "Open":



#### 4-Click "Update E4"

- The text box will read "WCU Found" as well as a few other things.
- The software erases the E4, then loads the new firmware.
- While loading the firmware the cursor will move, placing dots on the screen.
- When the firmware has been updated the text box will state "Reboot", "WCU: reBoot"

\*\*\*DO NOT unplug the USB cable or remove power while updating the firmware or the device may be rendered useless\*\*\*



5-Repeat the same procedure above to load new firmware into the WCU by selecting the "Update WCU" button

6-You can now close the "Ridetech E4 Loader" program by clicking the "X" in the top right

7-Physically unplug the E4 main ECU connector to cycle power, wait 10 seconds, then plug it back in.

8-You may now check the firmware versions of the ECU and WCU by selecting the "Menu" button on the main screen, then selecting the "Info" button.

Menu

**Info**

Home

	WCU	E4
Software Version:	0.10	1.10
Boot Version:	1.01	1.04
Hardware Version:	2	2
Power Cycles:		5